

## WEATHER & AIR QUALITY MONITORING STATION

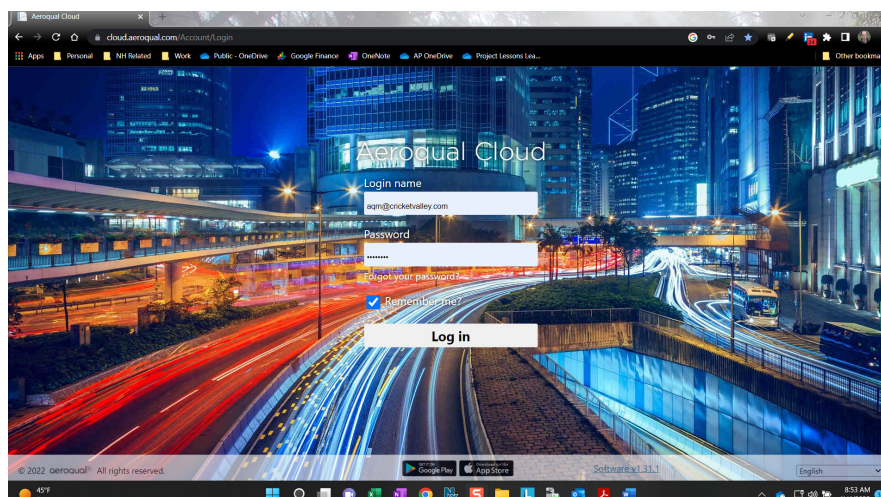
### @ Dover High School

Website: <http://cloud.aeroqual.com>

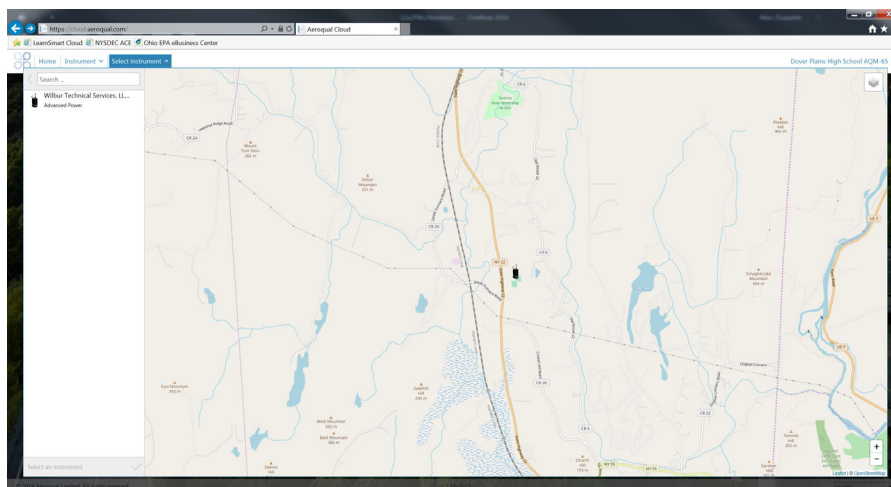
Login: AQM@cricketvalley.com

Password: CVEC-AQM (read-only access)

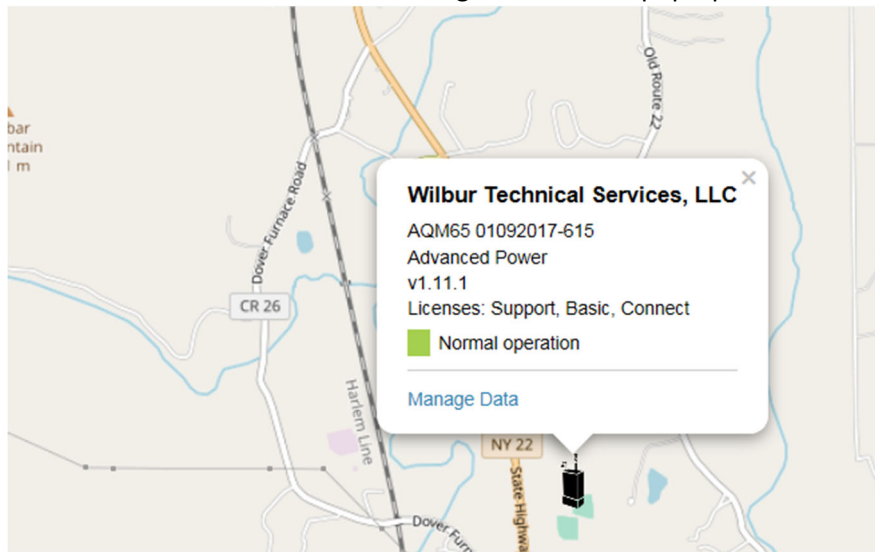
Logging in takes you to this screen...



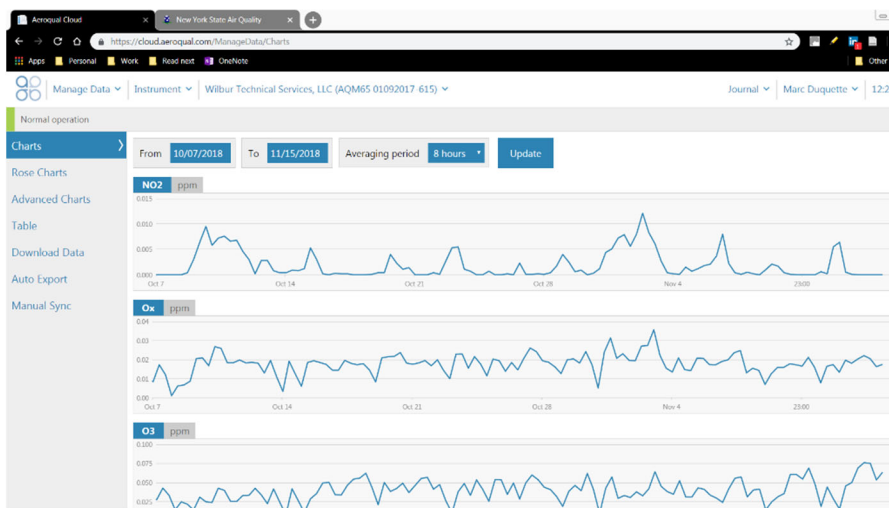
Click "Manage Data." This takes you here...



Click the black monitor icon. Then click “Manage Data” in the pop-up window that appears.



This takes you to the chart window displaying real-time data for the current calendar day.



Search the data for any given time period using the search fields at the top of the screen. View the data in tabular format by clicking “Table” option on the left. Download the data into an Excel spreadsheet by clicking “Download.” The weather and air quality monitoring station displays the following charts...

- Nitrogen Dioxide (NO<sub>2</sub>) in parts per million
- Ozone (O<sub>3</sub>) in parts per million
- Particulate Matter with particle sizes 2.5 micron or less (PM<sub>2.5</sub>) in micrograms per cubic meter
- Wind Speed (WS) in meters per second
- Wind Direction (WD) in degrees (0° = North, 90° = East, 180° = South, 270° = West)
- Rain (RAIN) in millimeters per hour (this will always be zero as we do not have a rain gauge installed)
- Barometric Pressure (PRESS) in hectopascals (hPa)
- Air Temperature (AIR T) in Celcius (°C)
- Relative Humidity (AIR RH) in percent (%) (less than 60 is considered dry air, > 60 = moist air).
- *Note: The balance of the charts are for calibration purposes or to measure conditions within the monitoring station.*

Questions? Contact Marc Duquette at Cricket Valley Energy Center, LLC at [mduquette@crickeyvalley.com](mailto:mduquette@crickeyvalley.com)

*Notice: Use the AQMS data with caution. Read-only access to the AQMS does not provide the user with background information such as calibration data or journal entries related to service and maintenance activities. Therefore, anomalies in the data may not represent actual, valid air quality readings. Contact Cricket Valley Energy Center, LLC if you have any questions.*