

# Monthly Progress Update

February 2019

Jobs for

**1,100**

workers



Energy for

**1,000,000**

homes



# Steps for Safety



## Safety Statistics (Job to Date)

	Generation Station	Transmission Line
Near Misses	48	6
First Aids	137	6
Recordables	10	1
Lost Time	0	0
Hours Worked	1,882,256	166,970

# Cricket Valley Energy Center Construction Progress



COMING 2020  
FUTURE HOME OF  
CRICKET VALLEY  
ENERGY CENTER

Cricket Valley Energy **BECHTEL**

2241  
ROUTE 22  
FOR MORE INFORMATION  
PLEASE VISIT:  
[WWW.CRICKETVALLEY.COM](http://WWW.CRICKETVALLEY.COM)

**SAFETY, QUALITY  
AND COLLABORATION**

TEAMING UP WITH:



# Community Outreach



On Saturday, February 16<sup>th</sup>, the CVEC Team hosted the J. H. Ketcham Hose Company for another scheduled “familiarity” site visit.

This allows the fire company to get an updated view of the plant configuration and discuss the changing construction activities (longing for those green grass days!).



# Community Outreach



Our Stewardship Committee has invited the local Girl Scout Troops to hold some cookie sales on Site. There is a good chance they will exceed their sales goals!

While they are visiting, we also plan to showcase the many different career possibilities on this type of project.



# Community Outreach



Cricket Valley donated the funds collected from recycling the project's steel scraps to the Center of Compassion, one of our favorite local groups.

The team also continues to help unload Food Pantry deliveries each month. A recent load was over 6,000 pounds!



# Construction Highlights



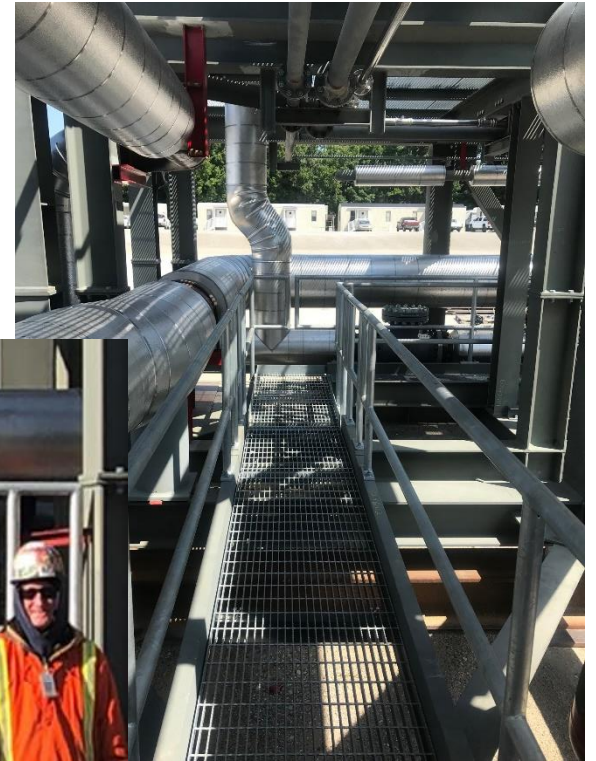
The Enerfab crew finished erecting the steel for the Turbine Hall. It is a long-standing, “Topping-Out” Iron-Worker tradition to place an evergreen and a flag on top when the final piece of steel is in place.



# Construction Highlight



The McAbee crew set the first pipe module in Unit #1 in September and set the last pipe module in Unit #3 at the very end of January...6 modules per unit, a total of 18 installed. All set with a perfect safety record.





# Construction Highlight



The E-J/Perreca crew pulled over 11,000 feet of cable through multiple manholes and thousands of feet of cable tray and conduit this month, all done in difficult weather conditions. In total, over 480,000 feet of cable is now in place.

Another job where the progress is not always visible and another job well done.



# Heavy Haul Trips Are Done



The last transformer traveled to the site from CT the night of February 19<sup>th</sup>, and was set in place early the following morning, without incident.

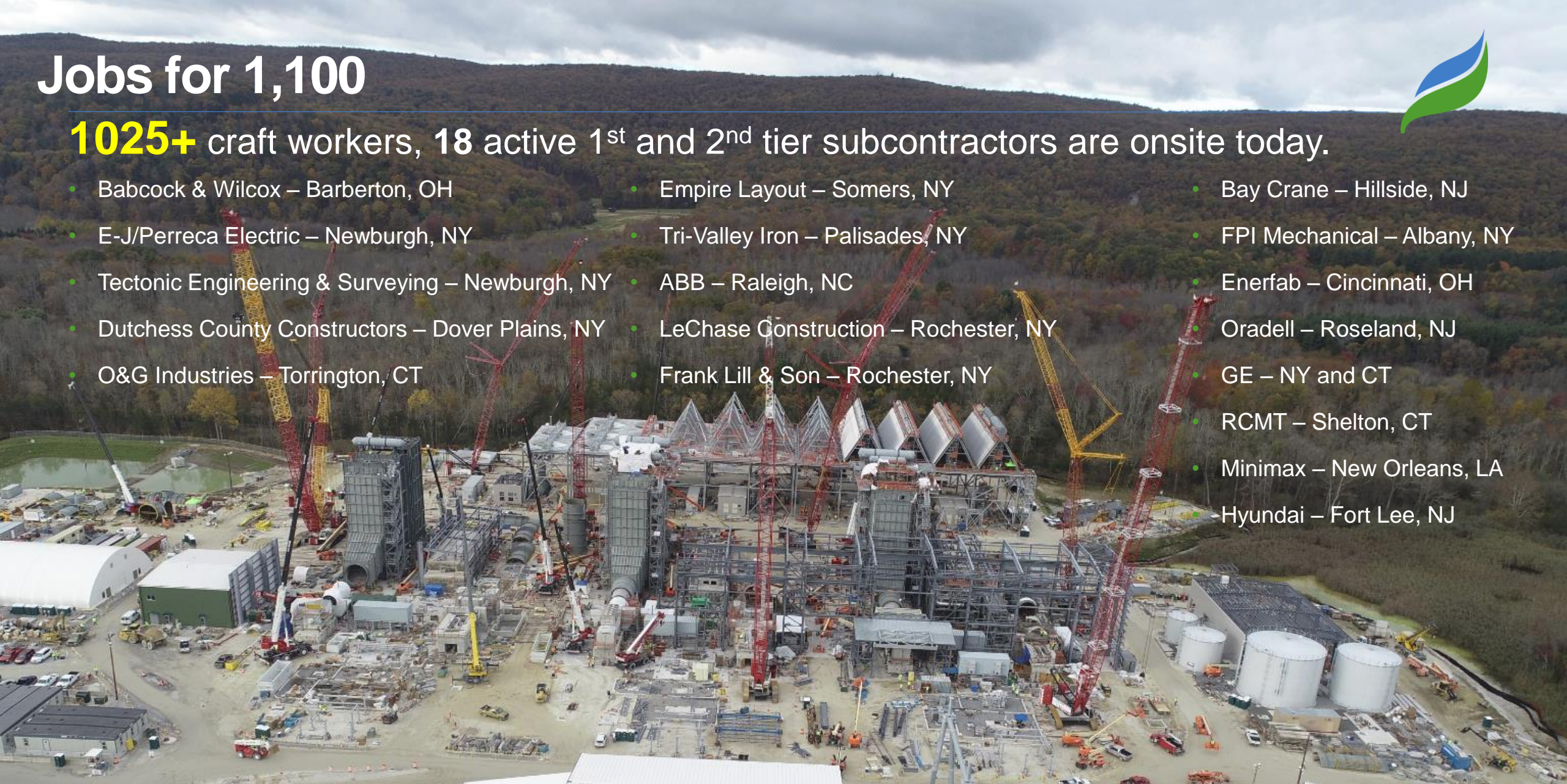


# Jobs for 1,100

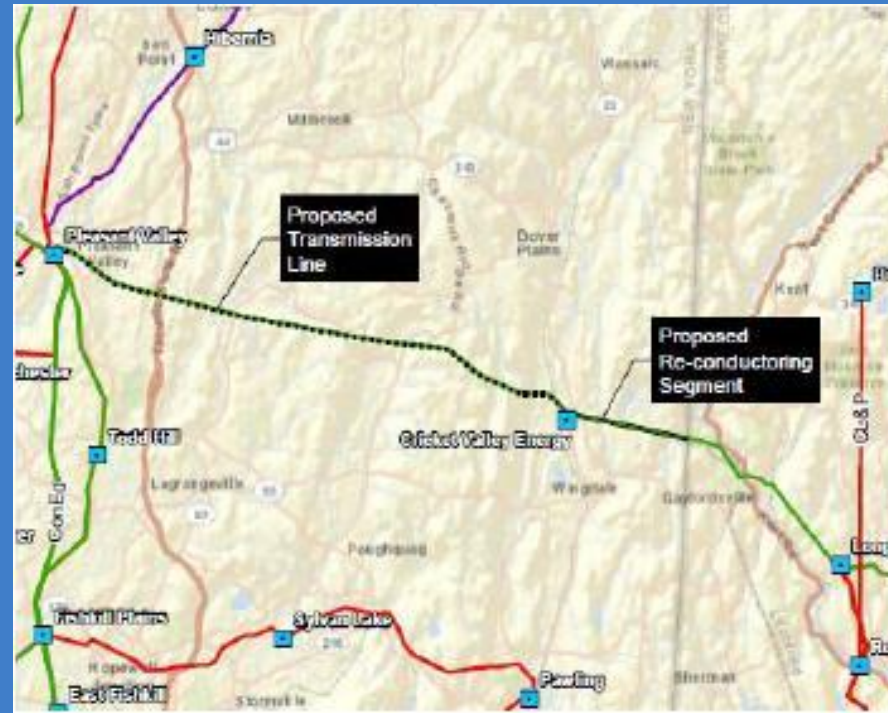


**1025+** craft workers, 18 active 1<sup>st</sup> and 2<sup>nd</sup> tier subcontractors are onsite today.

- Babcock & Wilcox – Barberton, OH
- E-J/Perreca Electric – Newburgh, NY
- Tectonic Engineering & Surveying – Newburgh, NY
- Dutchess County Constructors – Dover Plains, NY
- O&G Industries – Torrington, CT
- Empire Layout – Somers, NY
- Tri-Valley Iron – Palisades, NY
- ABB – Raleigh, NC
- LeChase Construction – Rochester, NY
- Frank Lill & Son – Rochester, NY
- Bay Crane – Hillside, NJ
- FPI Mechanical – Albany, NY
- Enerfab – Cincinnati, OH
- Oradell – Roseland, NJ
- GE – NY and CT
- RCMT – Shelton, CT
- Minimax – New Orleans, LA
- Hyundai – Fort Lee, NJ



# Construction Progress Transmission Upgrade



# Transmission Line Progress Update



- ✓ Completed Tower Erection  
(64 of 64 complete)
- ✓ Completed pulling conductor
- ✓ Setup for Final Conductor Tie-in to CVEC



Marker Balls near Sky Acres Airport

# 4 Week Look Ahead – Transmission Upgrade



## Activities for March

- ✓ Complete Final Conductor Tie-in to CVEC
- ✓ Start Restoration



Final Tower Constructed Near CVEC



- More Information?
  - Scott Curry, Project Director
  - [scurry@cricketvalley.com](mailto:scurry@cricketvalley.com)