

Monthly Progress Update

September 2018

Jobs for

1,100

workers



Energy for

1,000,000

homes



Steps for Safety



Safety Statistics (Job to Date)

	Generation Station	Transmission Line
Near Misses	35	3
First Aids	57	6
Recordables	4	0
Lost Time	0	0
Hours Worked	916,311	115,720

Cricket Valley Energy Center Construction Progress



Community Outreach



The CVEC Team continues to lend a few strong bodies each month for the Center of Compassion when the larger food trucks come with deliveries.

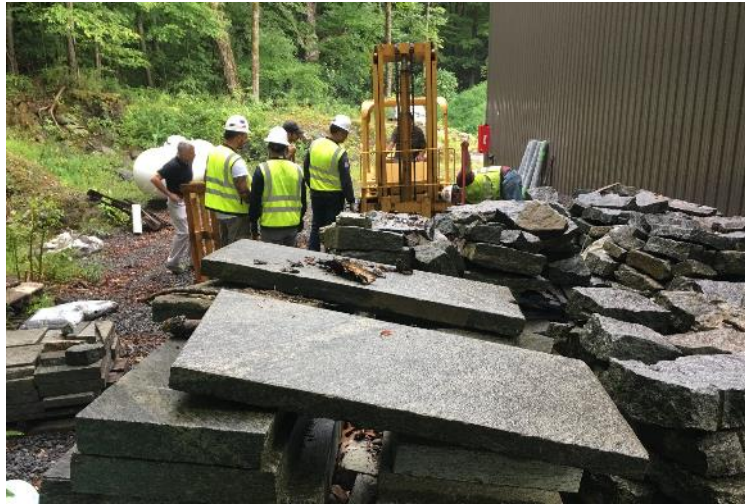


Community Outreach



CVEC was asked by *Solutions for a Better Dover* to help the Town accept a donation of large stone from Crown Maple.

Our team provided equipment and muscle to wrap, load, transport and then store the granite at our Laydown Yard until it is needed for Town beautification projects.



Community Outreach



CVEC put together a foursome to participate in the Annual Nick Frankie Golf Event for the benefit of the Center of Compassion.



Celebrating our Customers and Communities



On September 12th, Bechtel marked its 120th Year Anniversary. Each office around the globe gathered to celebrate....we did it with cake!



Celebrating our Customers and Communities



On Sept. 12, 1872, Warren A. Bechtel was born. Twenty-five years later, he would set out from his ranch in Kansas with his wife, Clara, and his only assets - a pair of mules – to search for work building railroads.

That journey in 1898 would give rise to the founding of our company and a 120-year legacy of iconic projects, first in the American West and then across the globe.

From building railroads and highways to pipelines and dams, Warren was a born engineer, a bold entrepreneur, and a visionary innovator whose name would become synonymous with excellence in our industry.

**Five generations and 25,000 projects later,
those same ideals drive Bechtel today.**

Construction Progress Highlights



- All thirty HRSG modules and all three combustion turbines and generators have been delivered to site.



Unloading a HRSG module



One of the Combustion Turbines

Construction Progress Highlights



- The Unit 1 Turbine Building steel installation has started.



Construction Progress Highlights



- The tank construction for the water systems is complete.
- One is a Wastewater Collection Tank and the other is the Service/Fire Water Storage Tank.



Update on Route 22 Main Site Entrance



- All highway work is done. The temporary traffic signal is installed and waiting to be energized by NYSEG.



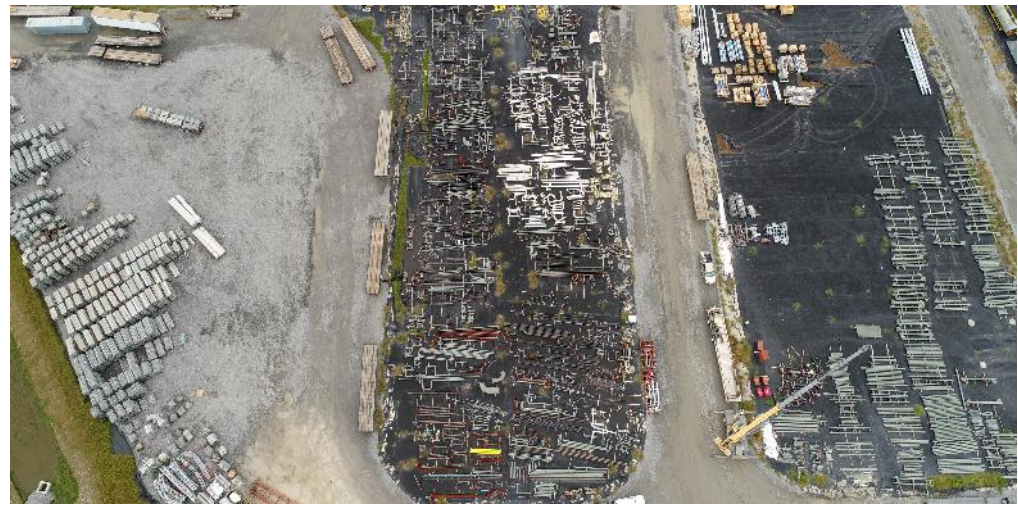
Update for Route 22 at Laydown Yard



- All highway work is completed. The temporary traffic signal is up and working.



Laydown Yard



Jobs for 1,100



500+ craft workers, 17 active 1st and 2nd tier subcontractors are onsite today.

- Babcock & Wilcox – Barberton, OH
- E-J/Perreca Electric – Newburgh, NY
- Tectonic Engineering & Surveying – Newburgh, NY
- Dutchess County Constructors – Dover Plains, NY
- O&G Industries – Torrington, CT
- Empire Layout – Somers, NY
- Tri-Valley Iron – Palisades, NY
- ABB – Raleigh, NC
- LeChase Construction – Rochester, NY
- Frank Lill & Son – Rochester, NY
- McCrossin – Hellertown, PA
- Bay Crane – Hillside, NJ
- FPI Mechanical – Albany, NY
- Enerfab – Cincinnati, OH
- Oradell – Roseland, NJ
- Tank Connection LLC – Parsons, KS
- GE – NY and CT



Construction Progress Transmission Upgrade



Transmission Line Progress Update



- ✓ Completed Helicopter Tower Construction
- ✓ Continued with Tower Erection
(48 of 64 complete)



Helicopter Construction of Towers

4 Week Look Ahead – Transmission Upgrade



Activities for October

- ✓ Complete Tower Erection
- ✓ Commence Line Stringing
 - ✓ Starting at Pleasant Valley
 - ✓ Working East
 - ✓ Utilize light duty helicopters beginning October 1
 - ✓ Completion Mid January



Installation of Conductor Arm

Active Sub-Contractors – Transmission Upgrade



- Real Time Engineering – Structure Design
- Supreme – Tree clearing, access road improvements, and work pad construction
- Aldridge Construction – Drilled Pier and Pile Cap construction



Installation of Top onto Base

Next Up



- More Information?
 - Scott Curry, Project Director
 - scurry@cricketvalley.com