

Monthly Progress Update

August 2018

Jobs for

1,100

workers



Energy for

1,000,000

homes



Steps for Safety



Safety Statistics (Job to Date)

	Generation Station	Transmission Line
Near Misses	26	3
First Aids	54	6
Recordables	3	0
Lost Time	0	0
Hours Worked	797,369	106,550

Cricket Valley Energy Center Construction Progress



Community Outreach



CVEC Site Manager, Jim Frank, provided a site tour for Dover Historians Caroline Reichenberg, Valerie LaRobardier and Dover Supervisor Linda French.

After a long history of industrial uses and sitting degraded and abandoned for over twenty years, the CVEC project provides a clean-up and new life for the property.



Community Outreach



This summer, members of the Stewardship Committee met with Dover Elementary School Principal, Mr. Harmelink, to develop a relationship as we have with the Dover High School and Middle School.

The team's first action was to help a family in need purchase the required school supplies.

We discussed the possibilities of holding an assembly, a job fair and class experiments with the younger students this coming school year.



Educational Outreach



Dream Big is a Bechtel sponsored film, launched in 2017, that celebrates the human ingenuity behind engineering marvels big and small. The film is now available on **NETFLIX**

Our interns hosted a viewing for our project team this summer.

As a next step, Bechtel has created *Dream Big in the Classroom* toolkits for K-12 students for the purpose of promoting engineering careers.



Construction Highlights



The Bechtel Interns went back to college, a sure sign that summer is over.

Their time here was very productive and their enthusiasm was contagious.

They worked closely with their mentors, completed projects, and visited a GE Facility and another Bechtel Power Plant Project.



Construction Progress Highlights



There are three HRSGs (Heat Recovery Steam Generators) on the project, each one getting 10 of these modules. Unit 1 has its modules in place and Unit 2 progress is underway.



Construction Progress Highlights



- Continued progress on the 45 fans that will cool the exhaust steam, allowing it to condensate for water recycling. The fans are built on the ground and then raised into place.



Construction Progress Highlights



- The GIS (Gas Insulated Switchyard) Building will be the first component of the CVEC Project to be turned over to Con Edison. The steel framing is complete and the green siding is being installed.
- The Administration Building is also well underway. It will house the staff responsible for running the plant once it is on line.



Update on Route 22 at Main Site Entrance



- Paving and striping is done.
- The temporary traffic signal is due to arrive mid-September.
- Waiting on some preliminary work on the overhead lines prior to installing the traffic light.



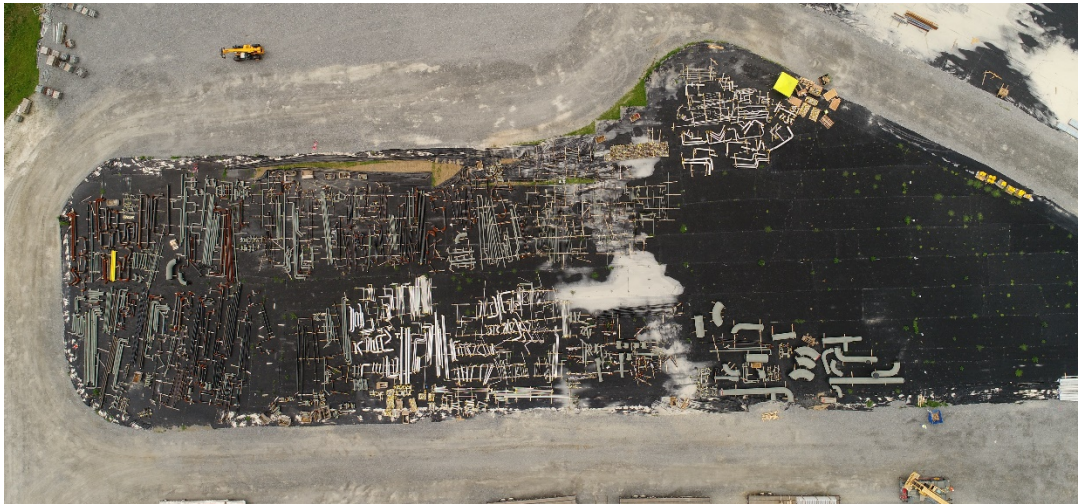
Update for Route 22 at Laydown Yard



- Paving of the entrance was completed last week (after this photos was taken).
- The concrete barriers will be removed this week.
- One more paving and striping to be done next week.
- Traffic signal due to arrive mid-September.



Laydown Yard



Jobs for 1,100



500+ craft workers, 16 active 1st and 2nd tier subcontractors are onsite today.

- Babcock & Wilcox – Barberton, OH
- C.B. Strain & Sons – Poughkeepsie, NY
- E-J/Perreca Electric – Newburgh, NY
- Tectonic Engineering & Surveying – Newburgh, NY
- Dutchess County Constructors – Dover Plains, NY
- O&G Industries – Torrington, CT
- Empire Layout – Somers, NY
- Tri-Valley Iron – Palisades, NY
- ABB – Raleigh, NC
- LeChase Construction – Rochester, NY
- Frank Lill & Son – Rochester, NY
- McCrossin – Hellertown, PA
- Bay Crane – Hillside, NJ
- FPI Mechanical – Albany, NY
- Enerfab – Cincinnati, OH
- Oradell – Roseland, NJ



Construction Progress Transmission Upgrade



Transmission Line Progress Update



- ✓ Completed concrete pile caps
- ✓ Continued with Tower Erection



Setting tower

4 Week Look Ahead – Transmission Upgrade



Activities for September

- ✓ Continue with Tower Erection
- ✓ Heavy Lift Tower Erection
- ✓ Commence Line Stringing



Conductor arms and insulators installed

Active Sub-Contractors – Transmission Upgrade



- Real Time Engineering – Structure Design
- Supreme – Tree clearing, access road improvements, and work pad construction
- Aldridge Construction – Drilled Pier and Pile Cap construction



One of the last foundations



Pole jack

Next Up



- More Information?
 - Scott Curry, Project Director
 - scurry@cricketvalley.com