

Monthly Progress Update

July 2018

Jobs for

1,100

workers



Energy for

1,000,000

homes



Steps for Safety



Safety Statistics (Job to Date)

	Generation Station	Transmission Line
Near Misses	21	2
First Aids	46	5
Recordables	2	0
Lost Time	0	0
Hours Worked	667,162	95,330

Cricket Valley Energy Center Construction Progress



Community Outreach



On June 30, our team volunteered to help the Boy Scouts of Hudson Valley get Camp Nooteming, in Salt Point, ready for its opening.

The group painted seven rooms and coated the entire basement in masonry waterproofing paint.

A Saturday well spent!



BOY SCOUTS OF AMERICA®
HUDSON VALLEY COUNCIL



Community Outreach



Our team, the **Cricket Valley Power Paddlers** participated in our second fundraising event for Habitat for Humanity, the Dutchess Dragon Boat Race and Festival.

Though we didn't win the final race, we won "Top Fundraiser"! Many thanks for the team's spirit and generosity.



Construction Highlights



Site Manager Jim Frank kicked off the Summer during the July 3rd heat wave by cooking for 500+ workers.

A great time was had by all!



Construction Progress Highlights



- This month, we had the longest Heavy Haul delivery to date.
- It contained the first GE combustion turbine.
- The load was 380 ft. long and weighed approximately 1,300,000 lbs.



Coming...

Photos taken
in front of
JH Ketcham
Station 1,
courtesy of
David
Graham.

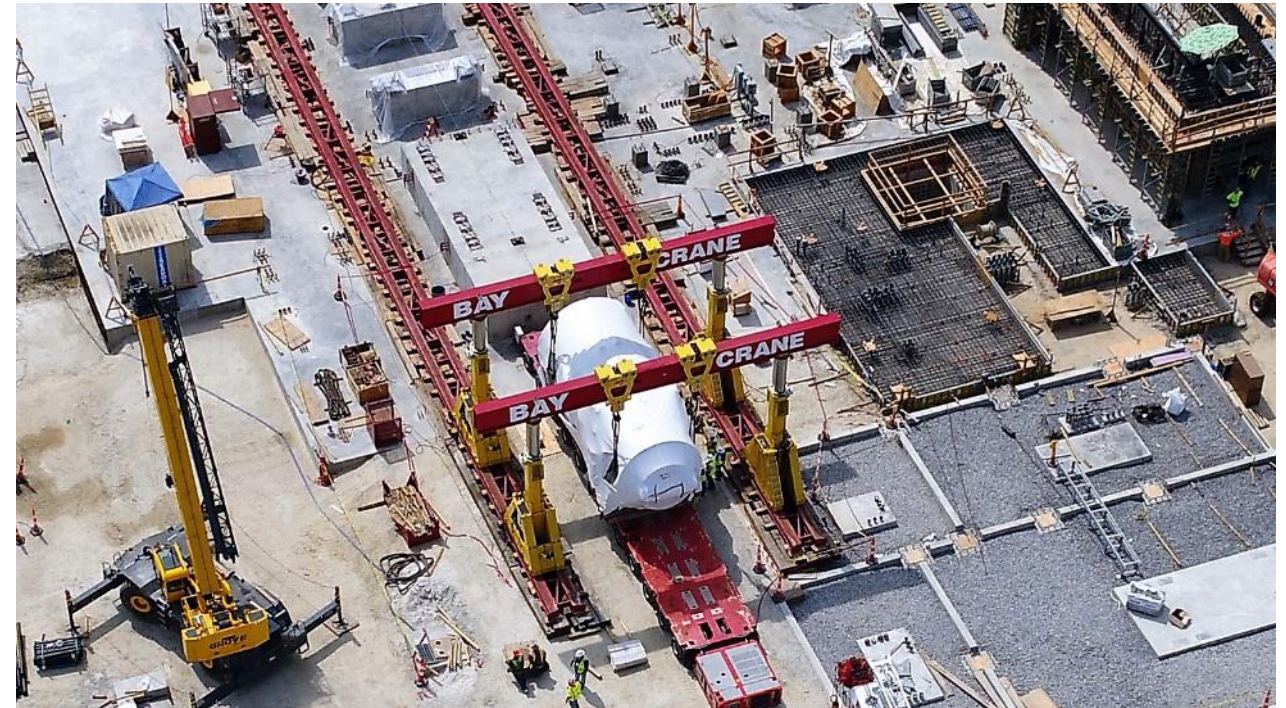


Going...

Construction Progress Highlights



The turbine was unloaded and made ready for installation.
This Unit 1 Gas Turbine is the first piece of rotating equipment
and a major milestone for the Project.



Construction Progress Highlights



- Another first for the Project, a module being lowered into the Unit 1 HRSG.
- This is one of ten modules that will become part of the HRSG.



Update for Route 22 Roadwork

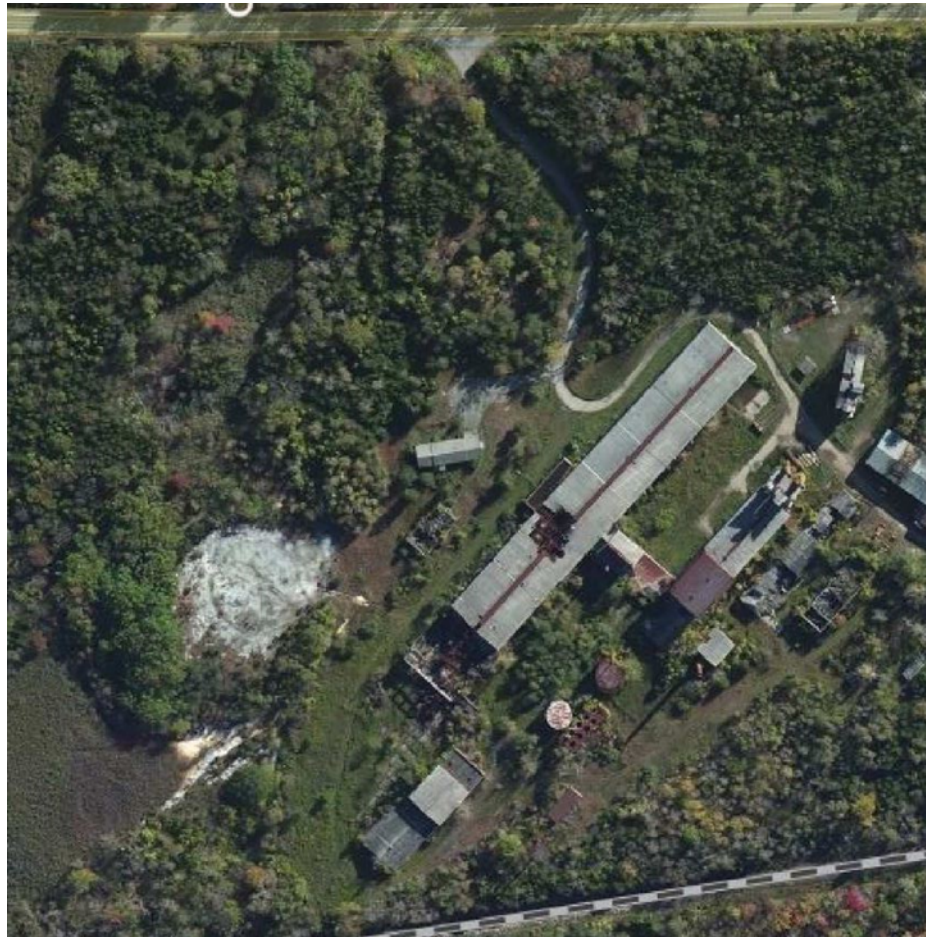


Please note this schedule is dependent on the weather. Next steps:

- The saw-cutting of Route 22 at the Laydown Yard is scheduled for this week
- Moving the Jersey barricades to the Laydown Yard area this week.
- Cricket Hill will be closed 7/26-7/27, opened to local traffic only for two days.
- Final paving of the area for CVEC Entrance scheduled for next week.



July 24 Marks One-Year of Construction on the Site

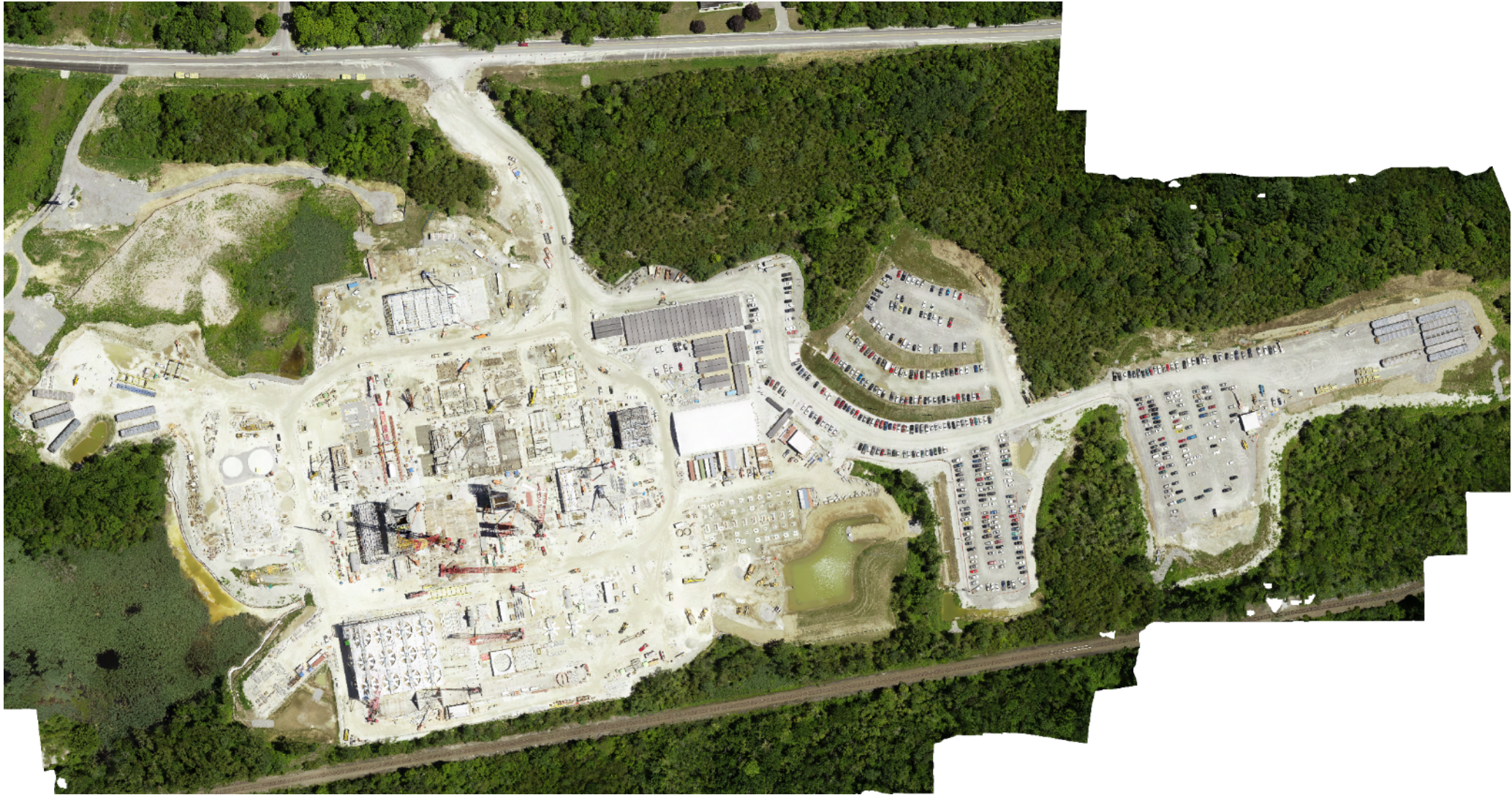


Aerial Before Demolition



Same View After Demolition

Construction is Moving Rapidly...



Regional Economic Impact



\$3.22 M – Bechtel LOCAL FIELD AWARDS to NY and CT based companies

- Current total through June 30, 2018 to over 70 suppliers
- Average monthly Bechtel spending is \$268K. This does not take in account the additional spending by sub-contractors and Cricket Valley.



\$350 M – Bechtel SUBCONTRACT Spending

- Awards issued to 12 separate NY/CT based contractors
- Many additional local contractors given competitive opportunity
- Many Subcontractors spread the award dollars to NY based sub-tier contractors, i.e. blasting, cranes, ready-mix concrete come from NY/CT based enterprises.

Jobs for 1,100



500+ craft workers, **16** active 1st and 2nd tier subcontractors are onsite today.

- Babcock & Wilcox - Barberton, OH
- C.B. Strain & Sons– Poughkeepsie, NY
- E-J/Perreca Electric – Newburgh, NY
- Tectonic Engineering & Surveying – Newburgh, NY
- Dutchess County Constructors – Dover Plains, NY
- O&G Industries – Torrington, CT
- Empire Layout – Somers, NY
- Tri-Valley Iron – Palisades, NY
- ABB – Raleigh, NC
- LeChase Construction – Rochester, NY
- Frank Lill & Son – Rochester, NY
- McCrossin – Hellertown, PA
- Bay Crane – Hillside, NJ
- FPI Mechanical – Albany, NY
- Enerfab – Cincinnati, OH
- Oradell – Roseland, NJ



Construction Progress Transmission Upgrade



Transmission Line Progress Update



- ✓ Completed ROW access road construction
- ✓ Completed ROW Work Pad Construction
- ✓ Completed Micro-pile construction
- ✓ Completed Drilled Pier construction
- ✓ Continued with concrete pile caps (34 of 58)
- ✓ Commenced Tower Erection



Helicopter Assist Concrete Cap

4 Week Look Ahead – Transmission Upgrade



Activities for August

- ✓ Continue with pile cap construction
- ✓ Continue with Helicopter Access Construction
- ✓ Continue with Tower Erection
- ✓ Preparations for Heavy Lift Tower Erection



Concrete Pile Cap

Active Sub-Contractors – Transmission Upgrade



- Crux – Foundation Design and Micro-pile Installation – Finished in July
- Real Time Engineering – Structure Design
- Supreme – Tree clearing, access road improvements, and work pad construction
- Aldridge Construction – Drilled Pier and Pile Cap construction



Base and Mid Section of Tower installed

Next Up



- More Information?
 - Scott Curry, Project Director
 - scurry@cricketvalley.com