



Advisory Working Group – Water, Wetlands & Wildlife

Long-Term Pump Test

August 26, 2010

Agenda



On Tap Next: Water

- ❑ **Introductions**
- ❑ **AWG Recap – 4/29/2010**
- ❑ **Project Update**
 - ❑ *SEQR Scoping Complete*
 - ❑ *DEIS Status Update*
- ❑ **Long-Term Pump Test**
 - ❑ *Conducted June 2010*
 - ❑ *Analysis & Results*
- ❑ **Chazen Companies**
 - ❑ *Aquifer Discussion*

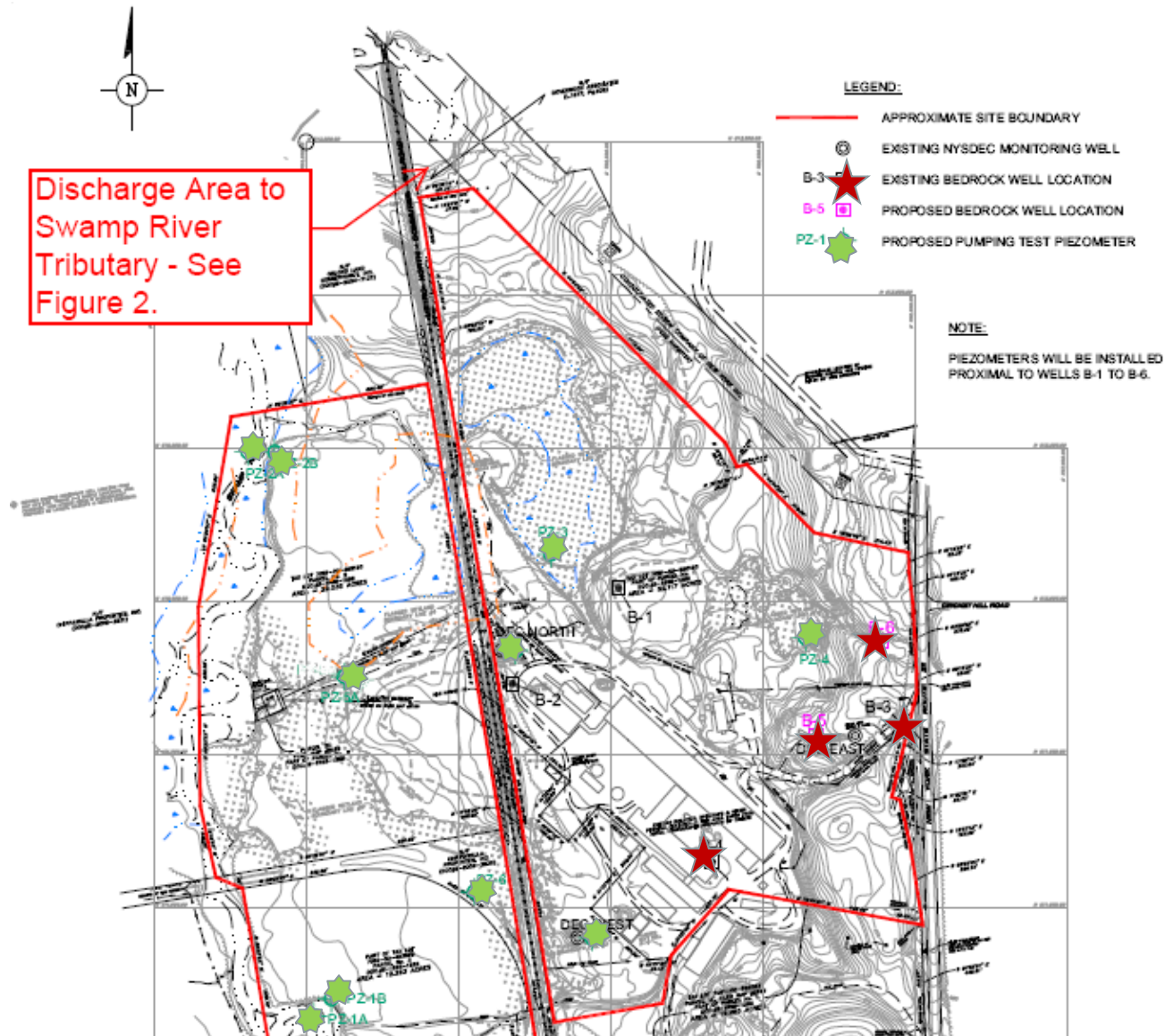
Advisory Working Group Recap

April 29, 2010

Guest Speaker: Chris LaPine, P.E., LEED® AP

- Discussion of Stormwater Pollution Prevention Plan (SWPPP)**
- Overview of Best Management Practices**
 - Bioretention Areas
 - Rooftop Catchment Storage System
 - Plunge Pools
 - Grass-Lined Swales
- Items identified for future discussion:**
 - Long-Term Pump Test
 - CVE's Zero-Liquid Discharge (ZLD) System
 - Stormwater Management during Construction

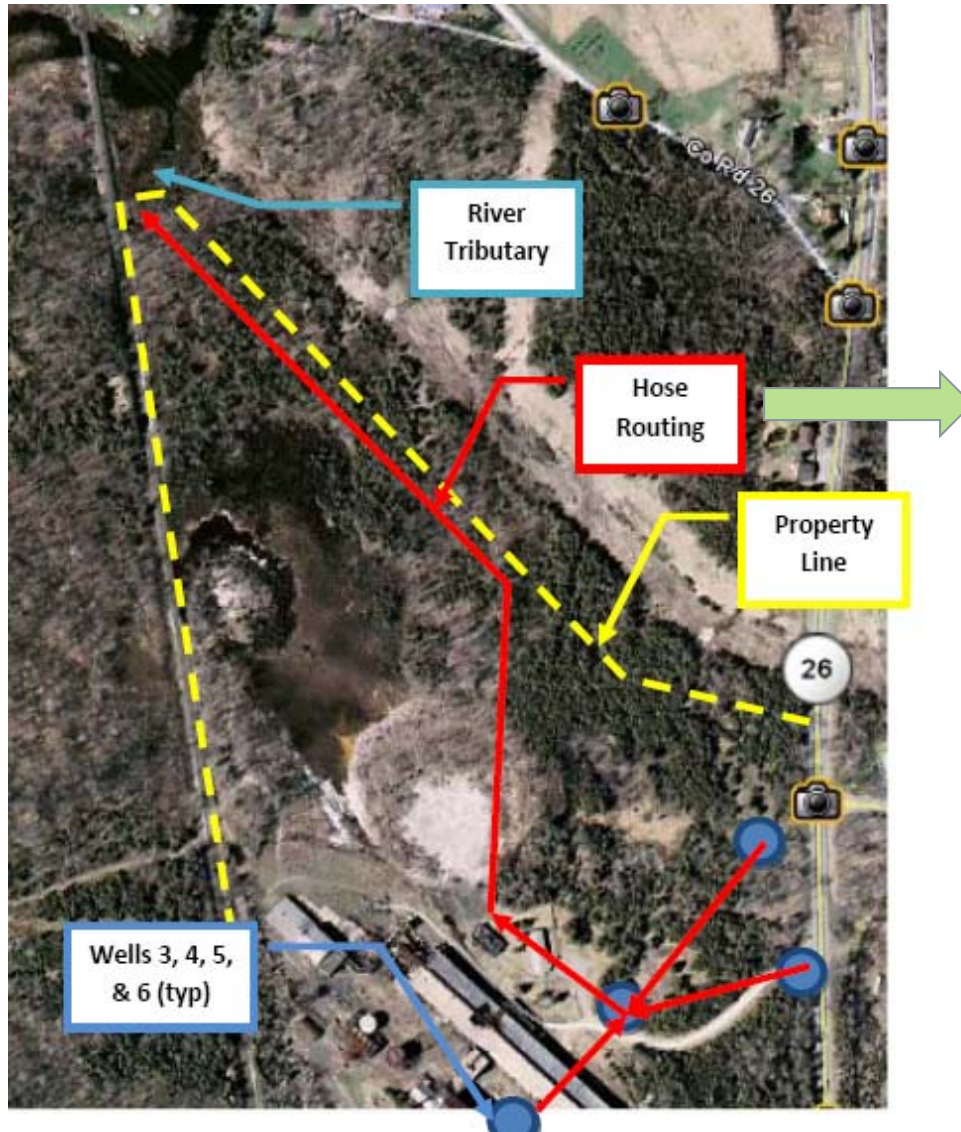
Long-Term Pump Test: Preparation



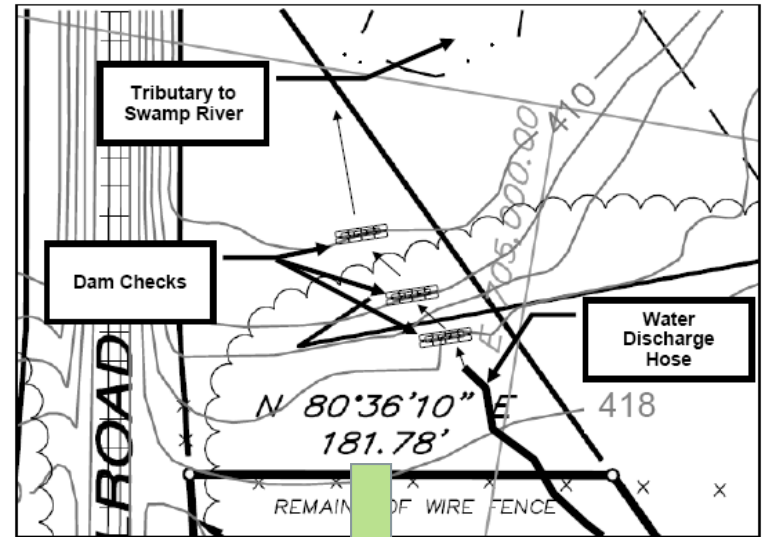
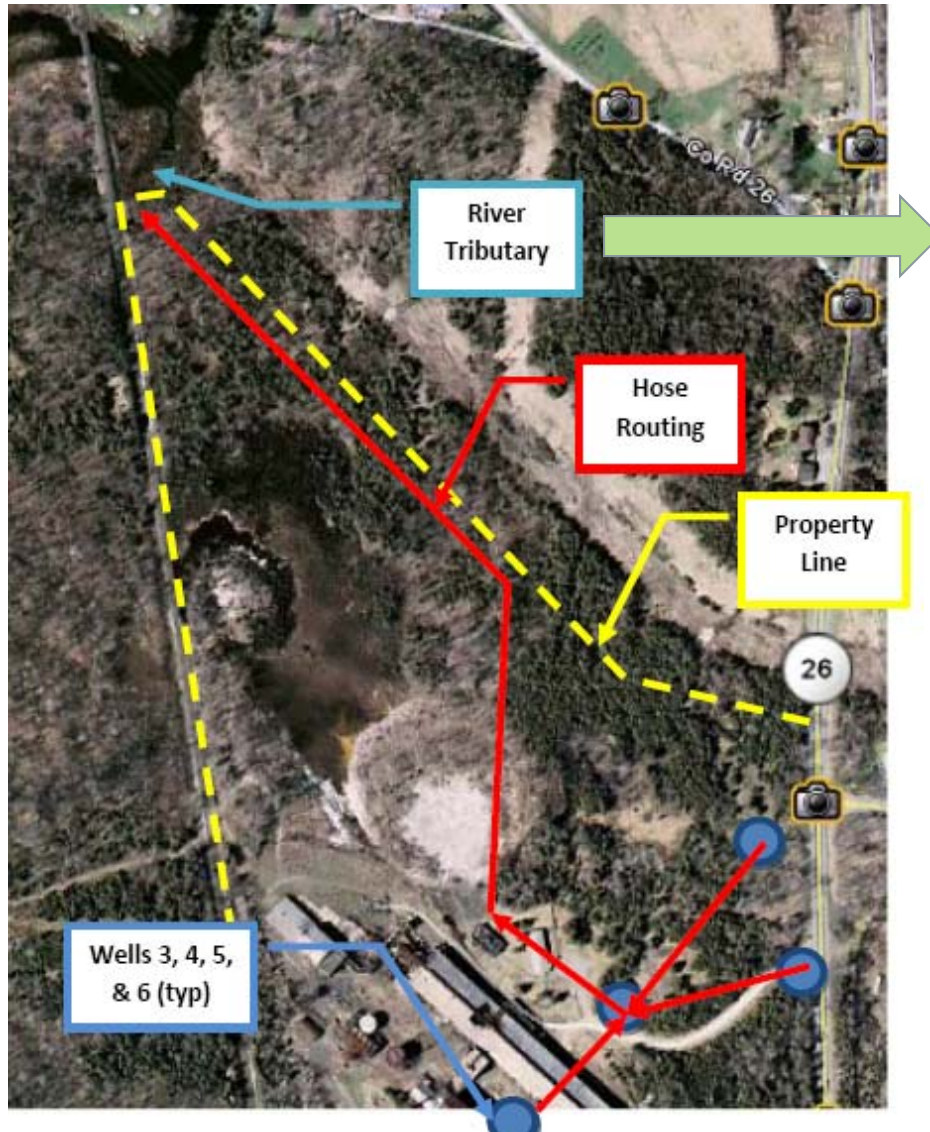
Long-Term Pump Test: Preparation



Long-Term Pump Test: Preparation



Long-Term Pump Test: Preparation



Long-Term Pump Test: Timeline

- ❑ December 2009 - obtained NYSDEC Wetland Permit for “monitors”
- ❑ March 2010 – postponed pump test due to near record rains
- ❑ May 2010 – installed “monitors” in neighboring wells – substantial baseline data
- ❑ June 2010:
 - ❑ Checked water quality before discharge into Swamp River – Good quality
 - ❑ Double & triple checked hoses for leaks – No leaks
 - ❑ Pump Test 1A – Wells 4 & 5 @120 gallons per minute (gpm)
 - Well 4 not stressed; no interactions - restarted test with Well 4 alone*
 - ❑ Pump Test 1B – Well 4 @ 120 gpm
 - 72-hour test*
 - Water Quality Samples taken during the test for water treatment system design (no surprises)*
 - ❑ Pump Test 2 – Wells 3, 5, and 6 @ 100 gpm for 72-hours

Long-Term Pump Test: Results & Conclusions

- ❑ Primary and backup well tests show no discernable impacts to Swamp River and wetlands (Chazen to address in detail)
- ❑ Primary well (Well 4) showed no interaction with adjacent wells: on-site or off-site
- ❑ Backup wells (Wells 3, 5, & 6) showed a very minimal influence on three neighboring wells – however, influence is minimal and will be insignificant to owner’s usage & consumption.
- ❑ Backup wells will only be utilized in rare maintenance to the primary well or emergency events.

Questions & Contacts



Matthew Martin, Associate Project Manager

845-877-0596, mmartin@advancedpowerna.com

5 Market Street, Dover, NY 12522

Bob De Meyere, Project Manager

617-456-2214, bdemeyere@advancedpowerna.com

31 Milk Street, Suite 1001, Boston, MA 02109