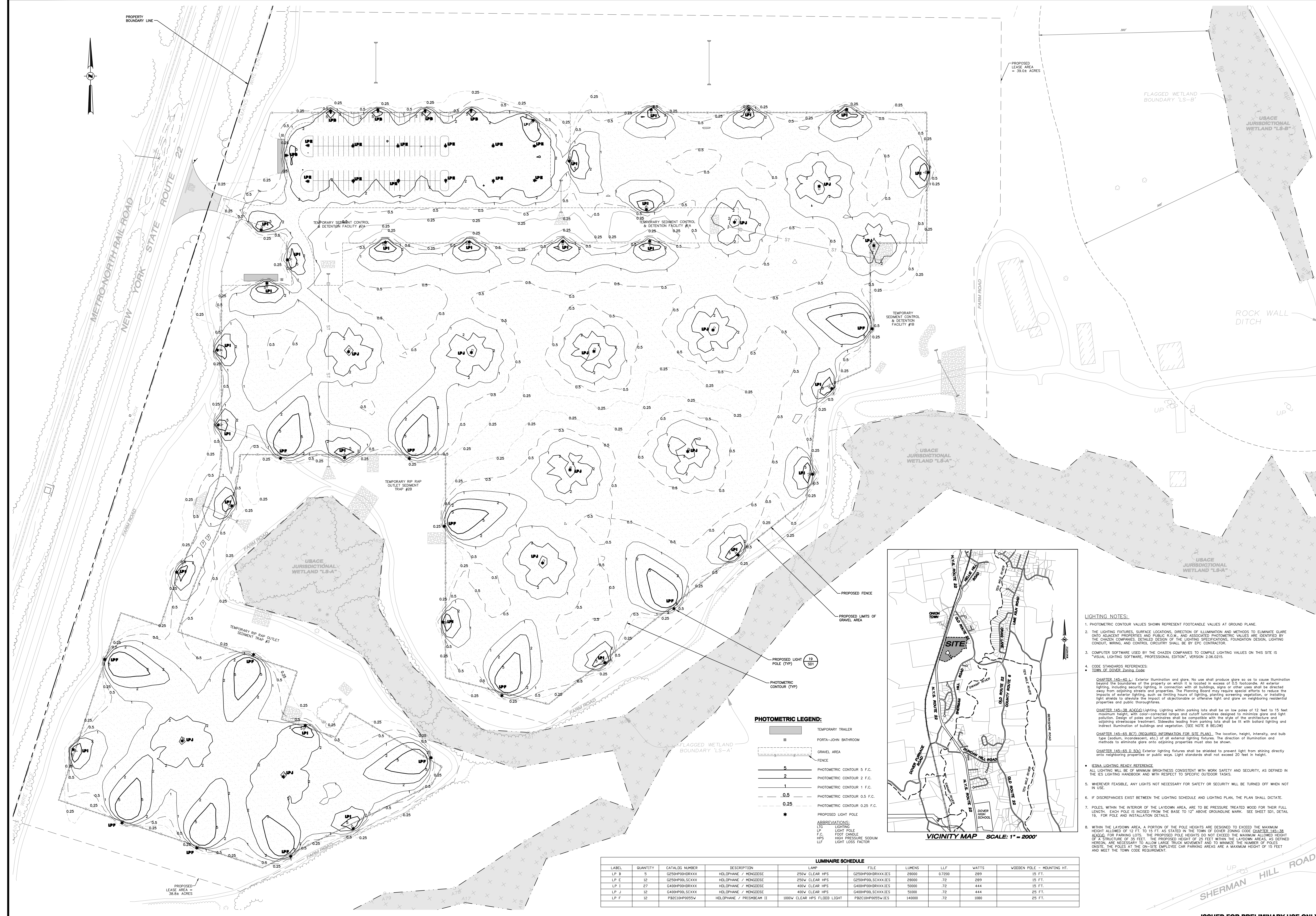


Appendix 6-B: Remote Laydown Site Lighting Plan



PHOTOMETRIC LEGEND:

- TEMPORARY TRAILER
- PORTA-JOHN BATHROOM
- GRAVEL AREA
- FENCE
- 5 PHOTOMETRIC CONTOUR 5 F.C.
- 2 PHOTOMETRIC CONTOUR 2 F.C.
- 1 PHOTOMETRIC CONTOUR 1 F.C.
- 0.5 PHOTOMETRIC CONTOUR 0.5 F.C.
- 0.25 PHOTOMETRIC CONTOUR 0.25 F.C.
- ★ PROPOSED LIGHT POLE

ABBREVIATIONS:

- LTC LIGHTING
- LFP LIGHT POLE
- F.C. FOOT CANDLE
- HPS HIGH PRESSURE SODIUM
- LFF LIGHT LOSS FACTOR

LUMINAIRE SCHEDULE

LABEL	QUANTITY	CATALOG NUMBER	DESCRIPTION	LAMP	FILE	LUMENS	LLF	WATTS	WOODEN POLE - MOUNTING HT.
LP B	3	G250HP08DRXXX	HOLDIPHANE / MINGOISE	250W CLEAR HPS	G250HP08DRXXXIES	28000	0.700	289	15 FT.
LP E	12	G250HP08LSCXXX	HOLDIPHANE / MINGOISE	250W CLEAR HPS	G250HP08LSCXXXIES	28000	.72	289	15 FT.
LP I	27	G400HP08DRXXX	HOLDIPHANE / MINGOISE	400W CLEAR HPS	G400HP08DRXXXIES	50000	.72	444	15 FT.
LP J	12	G400HP08LSCXXX	HOLDIPHANE / MINGOISE	400W CLEAR HPS	G400HP08LSCXXXIES	51000	.72	444	25 FT.
LP F	12	P82C10HP05SW	HOLDIPHANE / PRISMBEAM II	100W CLEAR HPS FLOOD LIGHT	P82C10HP05SWIES	140000	.72	180	25 FT.

- LIGHTING NOTES:**
- PHOTOMETRIC CONTOUR VALUES SHOWN REPRESENT FOOTCANDLE VALUES AT GROUND PLANE.
 - THE LIGHTING FIXTURES, SURFACE LOCATIONS, DIRECTION OF ILLUMINATION AND METHODS TO ELIMINATE GLARE ON ADJACENT PROPERTIES AND PUBLIC ROW, AND ASSOCIATED PHOTOMETRIC VALUES ARE IDENTIFIED BY THE CHAZEN COMPANIES. DETAILED DESIGN OF THE LIGHTING SPECIFICATIONS, FOUNDATION DESIGN, LIGHTING CONDUIT, WIRING, AND CONTROL CIRCUITRY SHALL BE BY EPC CONTRACTOR.
 - COMPUTER SOFTWARE USED BY THE CHAZEN COMPANIES TO COMPLETE LIGHTING VALUES ON THIS SITE IS "VISUAL LIGHTING SOFTWARE, PROFESSIONAL EDITION", VERSION 2.06.0215.
 - CODE STANDARDS REFERENCES:
 - TOWN OF DOVER Zoning Code
 - CHAPTER 145-60 L.L. Exterior illumination and glare. No use shall produce glare so as to cause illumination beyond the boundaries of the property on which it is located in excess of 0.5 footcandle. All exterior lighting, including security lighting, in connection with all buildings, signs or other uses shall be directed away from adjoining streets and properties. The Planning Board may require special efforts to reduce the impacts of exterior lighting, such as limiting hours of lighting, planting screening vegetation, or installing light shields to eliminate the impact of objectionable or offensive light and glare on neighboring residential properties and public thoroughfares.
 - CHAPTER 145-38 A.A.G.G. Lighting. Lighting within parking lots shall be on low poles of 12 feet to 15 feet maximum height, with solar-corrected lamps and cutoff luminaires designed to minimize glare and light pollution. Design of poles and luminaires shall be compatible with the style of the architecture and adjoining streetscape treatment. Screens leading from parking lots shall be lit with bollard lighting and indirect illumination of buildings and vegetation. (SEE NOTE 8 BELOW)
 - CHAPTER 145-60 B.(7) (REQUIRED INFORMATION FOR SITE PLAN) The location, height, intensity, and bulb type (sodium, incandescent, etc.) of all external lighting fixtures. The direction of illumination and methods to eliminate glare onto adjoining properties must also be shown.
 - CHAPTER 145-65 D.5(a) Exterior lighting fixtures shall be shielded to prevent light from shining directly onto neighboring properties or public ways. Light standards shall not exceed 20 feet in height.
 - ESNA LIGHTING READY REFERENCE
 - ALL LIGHTING WILL BE OF MINIMUM BRIGHTNESS CONSISTENT WITH WORK SAFETY AND SECURITY, AS DEFINED IN THE ES LIGHTING HANDBOOK AND WITH RESPECT TO SPECIFIC OUTDOOR TASKS.
 - WHEREVER FEASIBLE, ANY LIGHTS NOT NECESSARY FOR SAFETY OR SECURITY WILL BE TURNED OFF WHEN NOT IN USE.
 - IF DISCREPANCIES EXIST BETWEEN THE LIGHTING SCHEDULE AND LIGHTING PLAN, THE PLAN SHALL DICTATE.
 - POLES, WITHIN THE INTERIOR OF THE LAYDOWN AREA, ARE TO BE PRESSURE TREATED WOOD FOR THEIR FULL LENGTH. EACH POLE IS INSET FROM THE BASE TO 12" ABOVE GROUNDLINE MARK. SEE SHEET 201, DETAIL 19, FOR POLE AND INSTALLATION DETAILS.
 - WITHIN THE LAYDOWN AREA, A PORTION OF THE POLE HEIGHTS ARE DESIGNED TO EXCEED THE MAXIMUM HEIGHT ALLOWED OR 12 FT. TO 15 FT. AS STATED IN THE TOWN OF DOVER ZONING CODE CHAPTER 145-38 A.A.G.G. FOR PARKING LOTS. THE PROPOSED POLE HEIGHTS DO NOT EXCEED THE MAXIMUM ALLOWED HEIGHT OF A STRUCTURE OF 30 FEET. THE PROPOSED HEIGHT OF 25 FEET WITHIN THE LAYDOWN AREAS, AS DEFINED HEREON, ARE NECESSARY TO ALLOW LARGE TRUCK MOVEMENT AND TO MINIMIZE THE NUMBER OF POLES ON-SITE. THE POLES AT THE ON-SITE EMPLOYEE CAR PARKING AREAS ARE A MAXIMUM HEIGHT OF 15 FEET AND MEET THE TOWN CODE REQUIREMENT.

PROJECT NAME
CRICKET VALLEY ENERGY - REMOTE LAYDOWN SITE

DEVELOPER
CRICKET VALLEY ENERGY CENTER, LLC.

OWNER OF RECORD
JAMES MUNCEY
344 LAKE ELLIS RD
WINGDALE, NEW YORK 12594

Dig Safety.
New York
Call The Inspector
Check Utility Locations
Respect The Signs
800-962-7962
www.digsafety.com

ALL RIGHTS RESERVED. COPY OR REPRODUCTION OF THIS PLAN OF ANY PORTION, HEREOF IS PROHIBITED WITHOUT THE WRITTEN PERMISSION OF THE DESIGN ENGINEER, SURVEYOR, OR ARCHITECT. ALTERATION OF THIS DRAWING, EXCEPT BY A LICENSED P.E. IS ILLEGAL. ANY ALTERATION BY A P.E. MUST BE IDENTIFIED AND BEAR THE APPROPRIATE SEAL, SIGNATURE AND DATE OF ALTERATION.

THE Chazen Companies
Engineers/Surveyors
Planners
Environmental Scientists
Landscape Architects

CHAZEN ENGINEERING, LAND SURVEYING & LANDSCAPE ARCHITECTURE CO., P.C.

Office Locations:
Dutchess County Office: 27 Van Street, Poughkeepsie, New York 12601, Phone: (845) 434-5900
Capital District Office: 245 West Street, Troy, New York 12180, Phone: (518) 871-6500
North Country Office: 102 Main Street, Oneonta, New York 13827, Phone: (518) 871-6513

DATE: 04/24/12
REVISED PER TOWN & CLIENT COMMENTS

**CRICKET VALLEY ENERGY
REMOTE LAYDOWN SITE**

PRELIMINARY LIGHTING PLAN

NYS ROUTE 22, TOWN OF DOVER PLAINS, DUTCHESS COUNTY, NEW YORK

ISSUED FOR PRELIMINARY USE ONLY

Drawn: MAF/AmJ
Checked: CL
Date: 02/24/12
Scale: 1"=50'
Project No.: 81001.01
Sheet No.: LT1

DATE: 04/24/12
REVISED PER TOWN & CLIENT COMMENTS