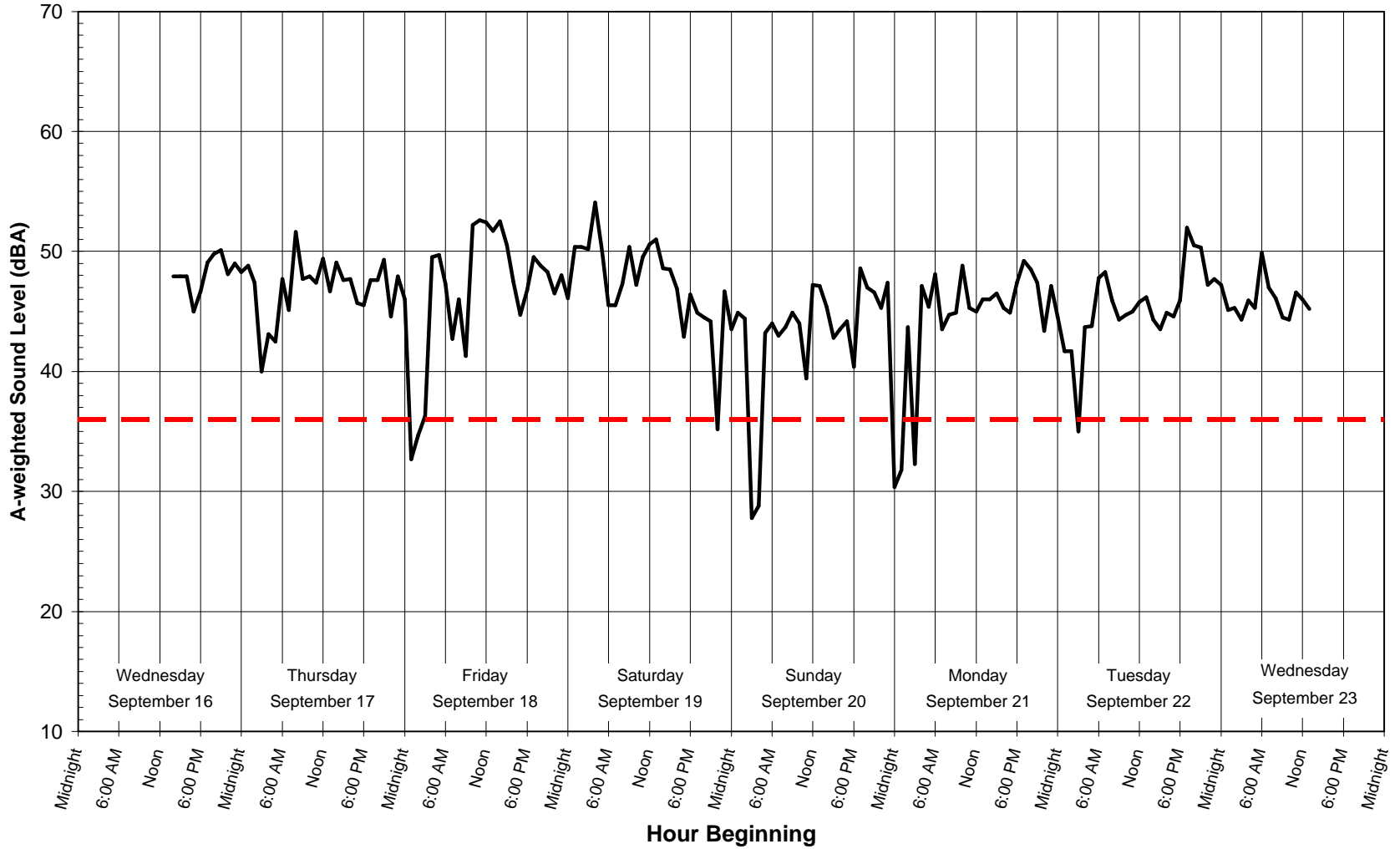


Aerial Photograph of Project Site Indicating Sound Monitoring Locations

Figure 6.4-1

Location 1 - Green Acres Conference Center

September 16, 2009 - September 23, 2009



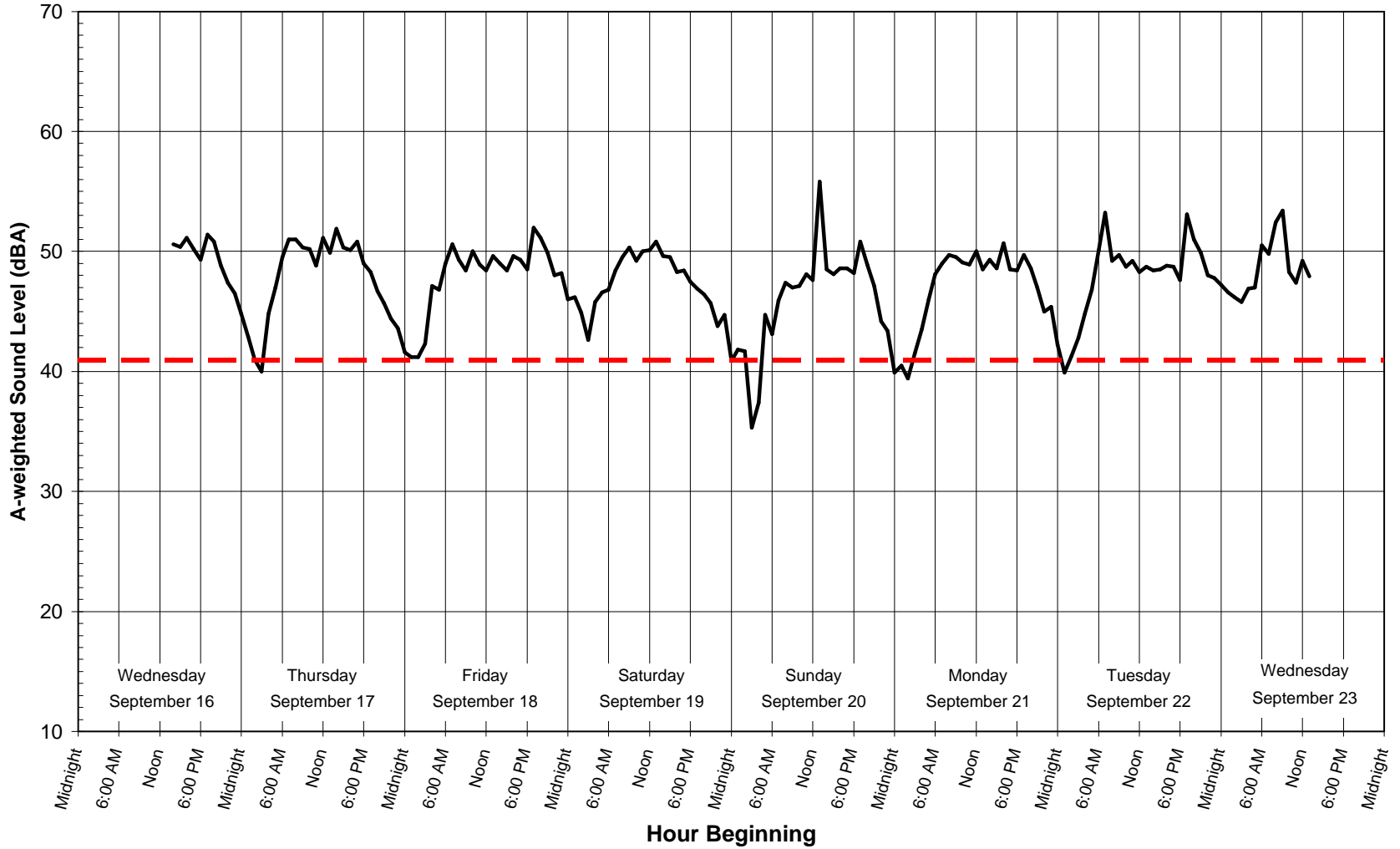
— Hourly Leq - "Energy Average" - - - "Nominally Lowest" Hourly Leq - 36 dBA

Figure 6.4-2



Location 2 - Gas Line ROW Near 3 Vincent Road

September 16, 2009 - September 23, 2009



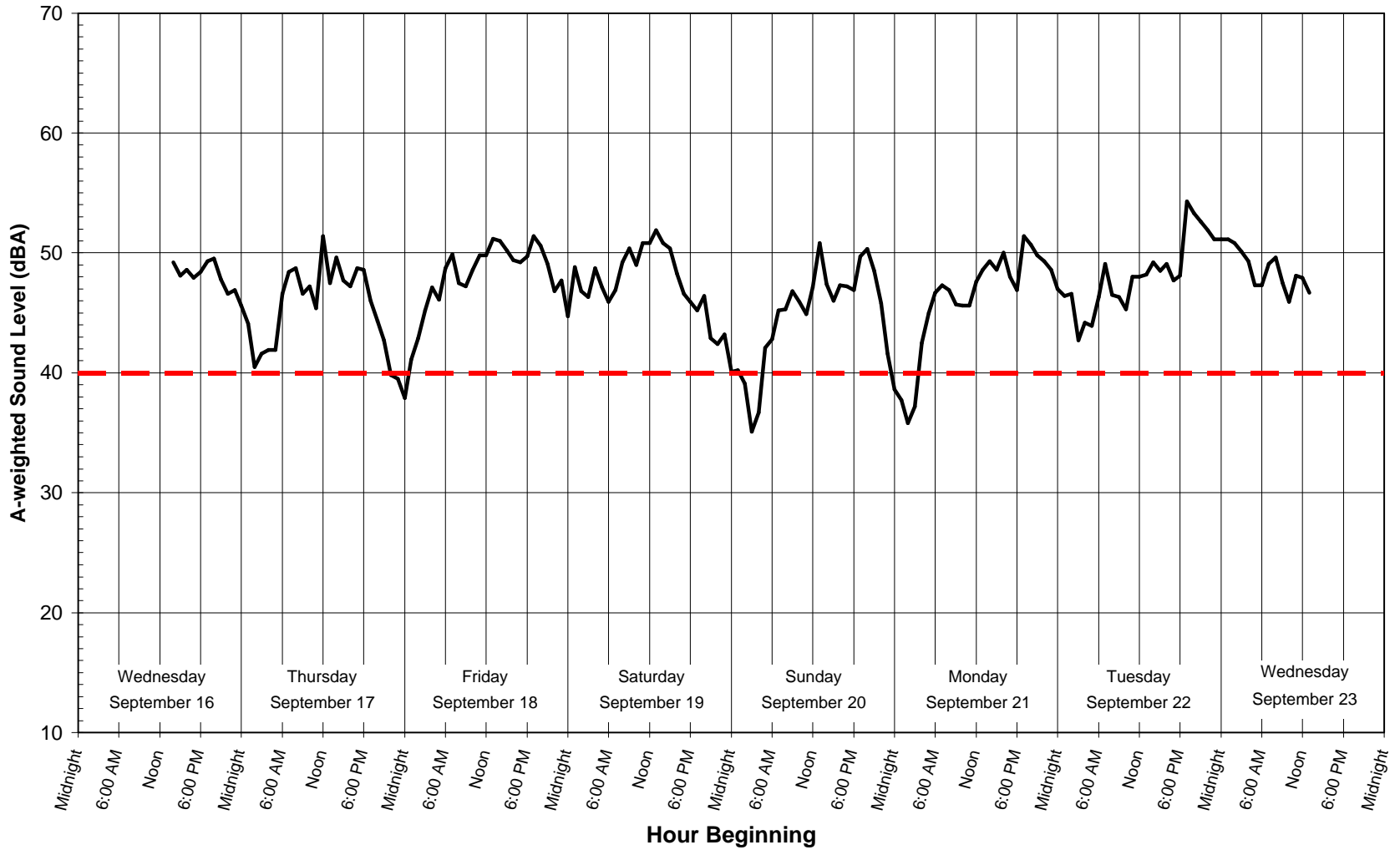
— Hourly Leq - "Energy Average" - - - "Nominally Lowest" Hourly Leq - 41 dBA

Figure 6.4-3



Location 3 - 7 Cricket Hill Road

September 16, 2009 - September 23, 2009



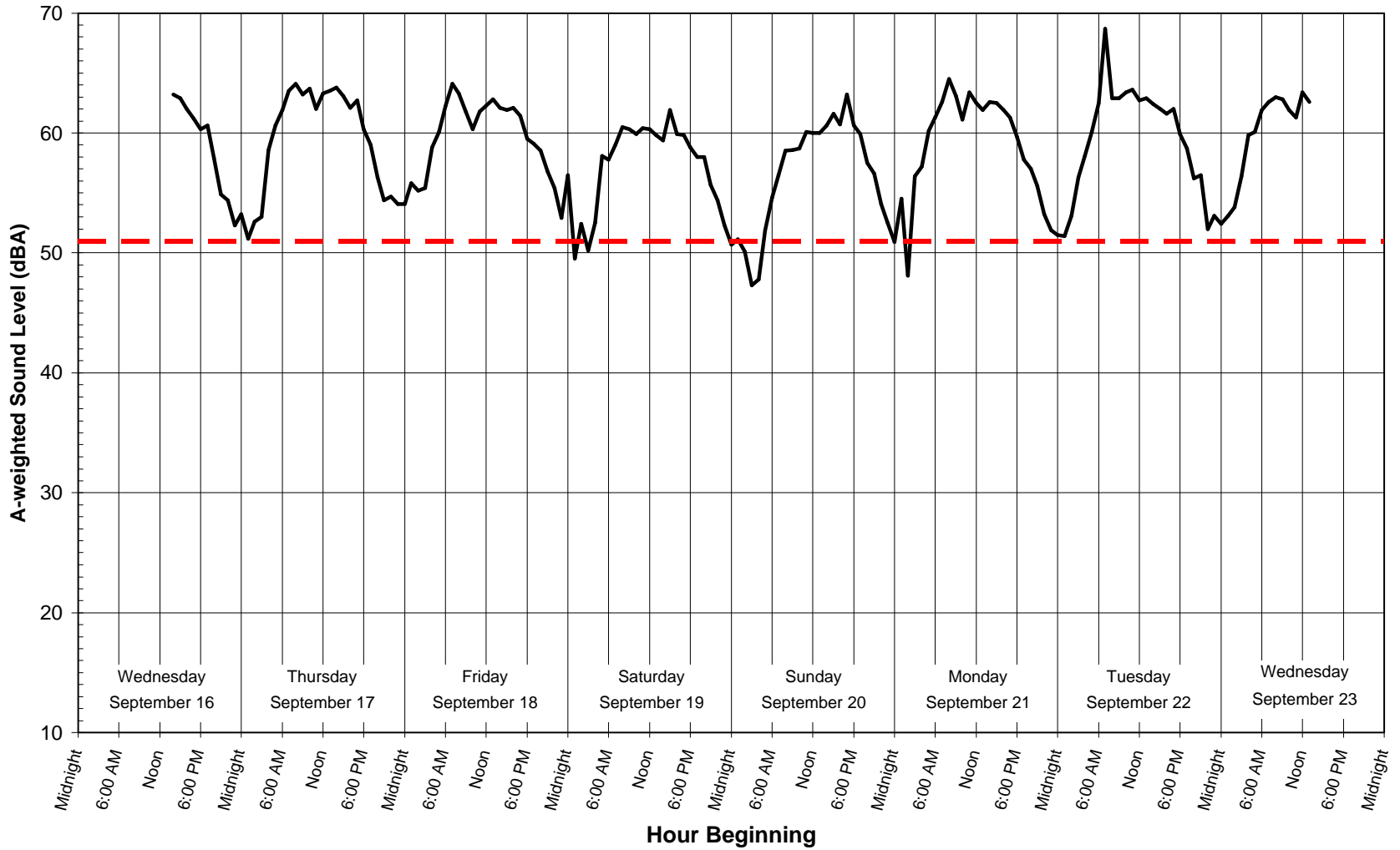
— Hourly Leq - "Energy Average" - - - "Nominally Lowest" Hourly Leq - 40 dBA

Figure 6.4-4



Location 4 - 2238 SR-22

September 16, 2009 - September 23, 2009



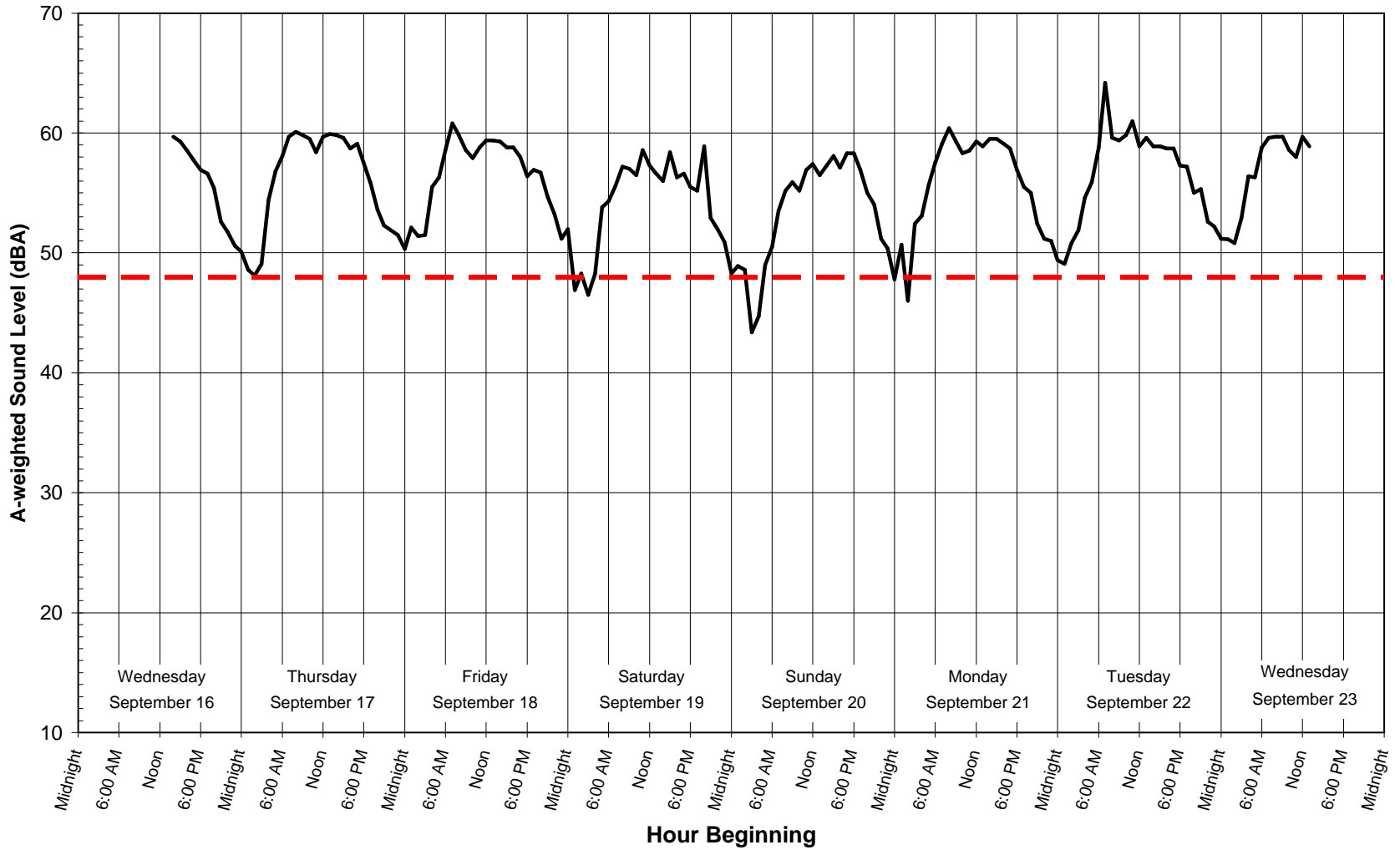
— Hourly Leq - "Energy Average" - - - "Nominally Lowest" Hourly Leq - 51 dBA

Figure 6.4-5



Location 5 - North Chippawalla Road

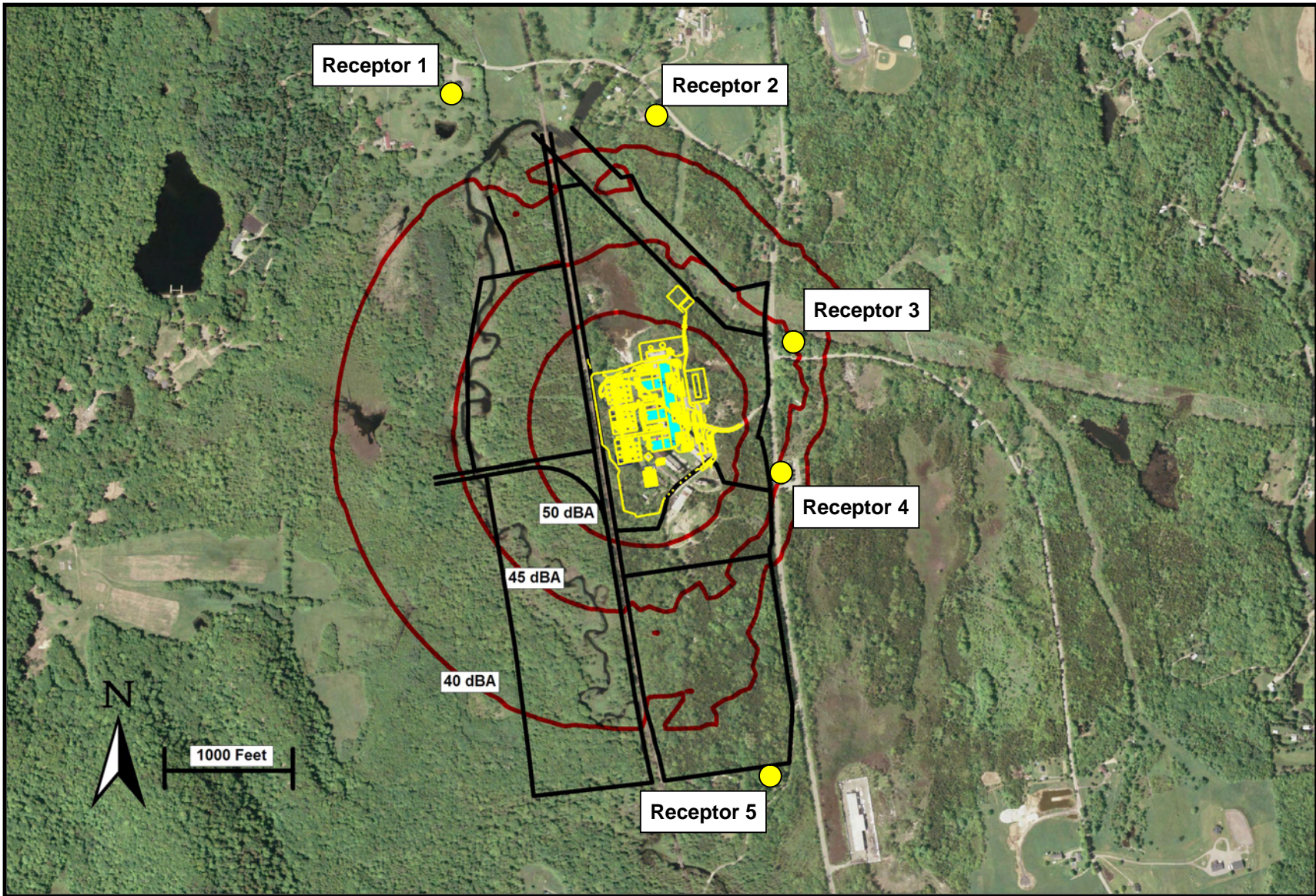
September 16, 2009 - September 23, 2009



— Hourly Leq - "Energy Average" - - - "Nominally Lowest" Hourly Leq - 48 dBA

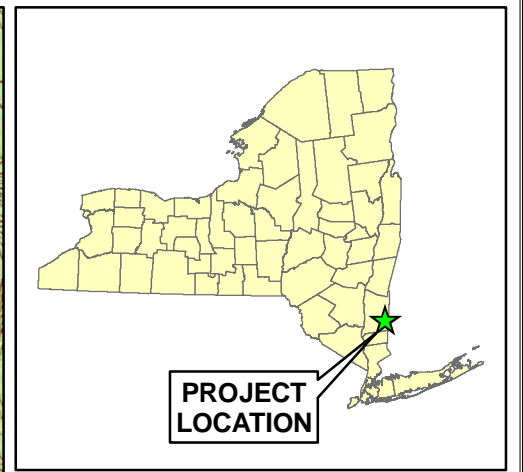
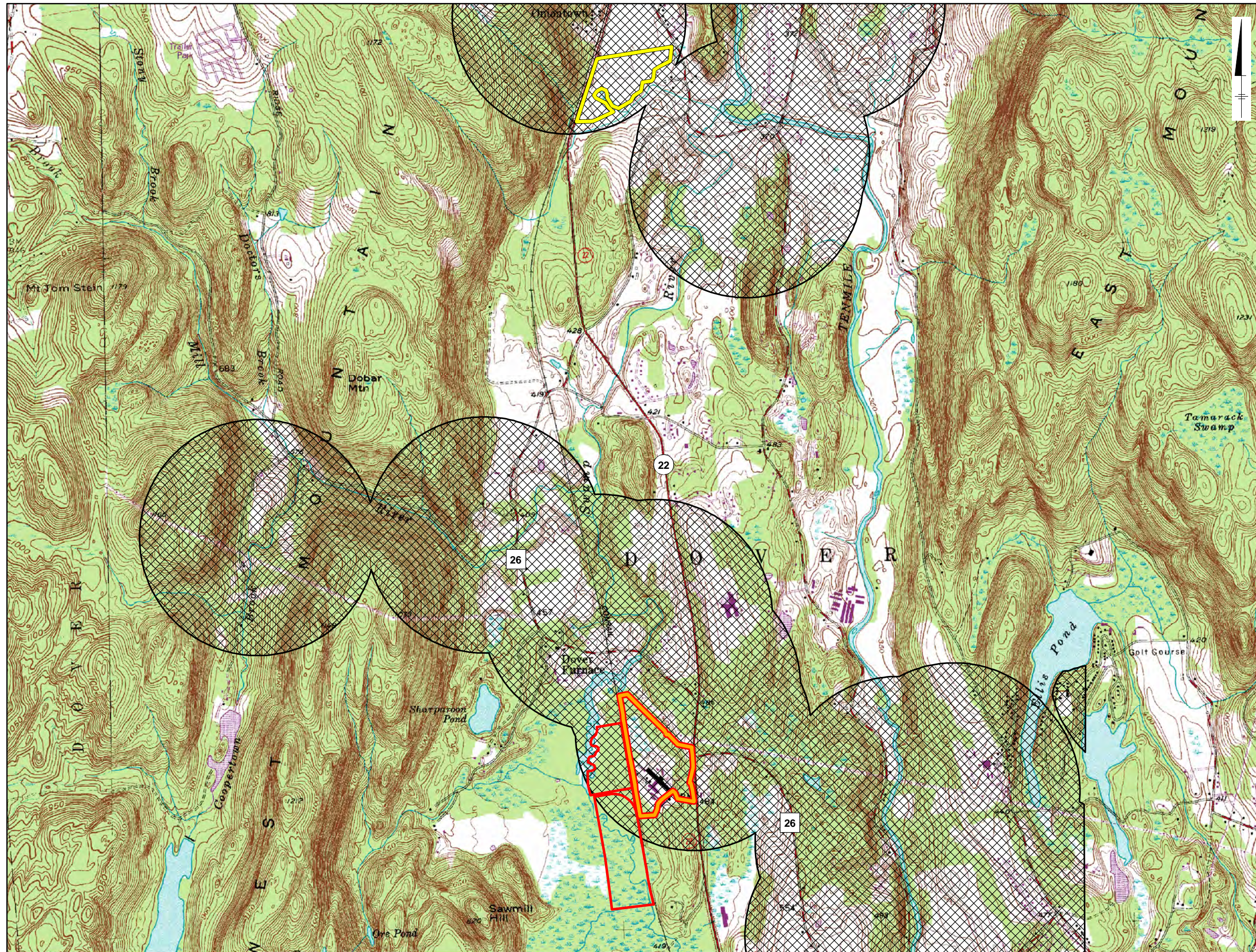
Figure 6.4-6









Aerial Photograph of Project Area with Isopleths of Project Related Sound (dBA @ 2 meters above ground)

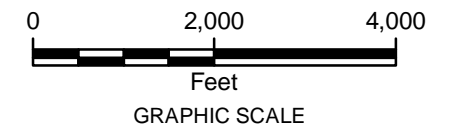
Figure 6.4-7



Legend

-  Property
-  Project Development Area
-  Laydown Site
-  Approximate Archeo Sensitive Area

SOURCE:
 1. USGS 7.5 Minute Topographic Maps (2000), Dover Plains Quad
 Cornell University Geospatial Information Repository.
 2. Archeo Sensitive Area: Digitized from information obtained from New York State Parks, Recreation, and Historic Preservation National Register Listing Internet Mapping Application.



CRICKET VALLEY ENERGY

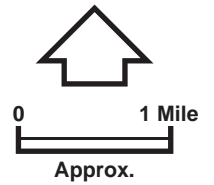
**FIGURE 6.6-1
 CULTURAL RESOURCE SENSITIVITY**

Dutchess County, New York

8388

100

Dover Plains 20841



170 Rd

Ridge Rd

400.01

Black Population = 2.5%
 (Alone or in combination with other races)

Hispanic Population = 4.5%

Population Below Poverty Line = 10.1%

DOVER TOWN 20819

SITE

StHwy 22

Cricketer Hill Rd

Tenmile River

400.02

Black Population = 8.1%
 (Alone or in combination with other races)

Hispanic Population = 6.4%

Population Below Poverty Line = 6.1%

Pogons

Old Rt 22

Dogtail

Corners

NEW YORK 36 DUTCHESS 027
CONNECTICUT 09 LITCHFIELD 005

W Dover Rd

Old Pawling Rd

6200

StHwy 55

StHwy 22

Askins Rd

Black Population = 62.4%
 (Alone or in combination with other races)

Hispanic Population = 19.2%

Population Below Poverty Line = 0%

Figure 6.7-1

MINORITY AND DISADVANTAGED POPULATION

CRICKET VALLEY ENERGY CENTER

Town of Dover, New York