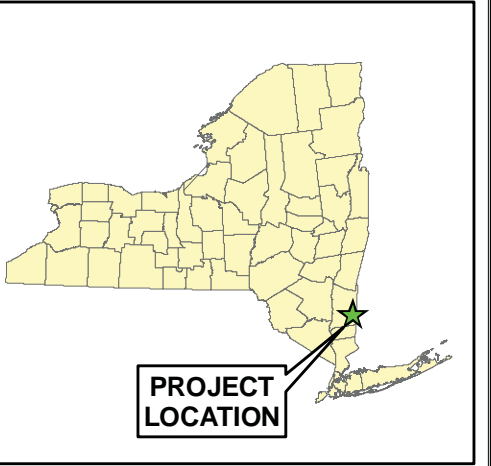
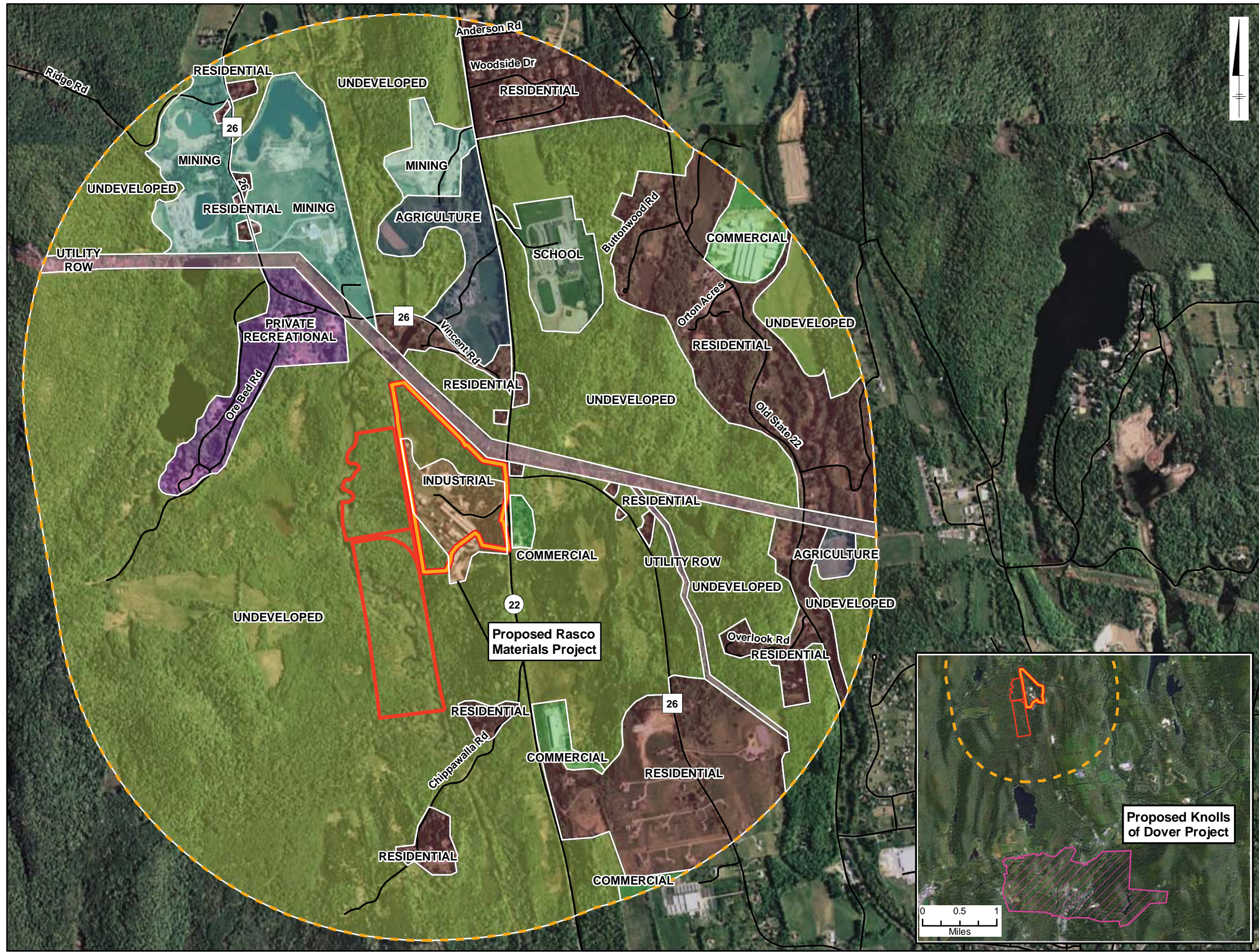


G:\projects\GIS\IP\Projects\PP_Misc\20090511_CricketHill\GIS\FIGURES\MXDS\20100728_FinalReport\Figs\Fig_CVEC_LU_1mile_20100916.mxd - 9/16/2010 @ 11:00:25 AM



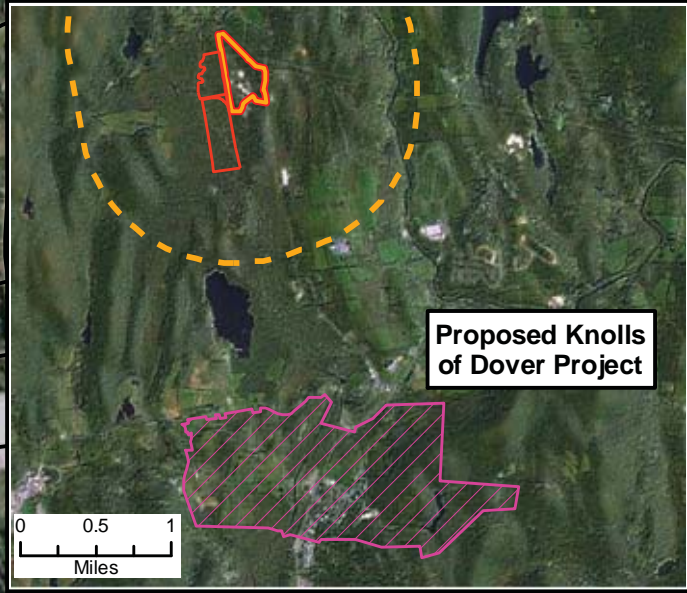
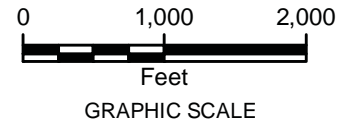
Legend

- Project Site
- Project Development Area
- 1 mile from Project Development Area

Land Use

- AGRICULTURE
- COMMERCIAL
- INDUSTRIAL
- MINING
- PRIVATE RECREATIONAL
- RESIDENTIAL
- SCHOOL
- UNDEVELOPED
- UTILITY ROW

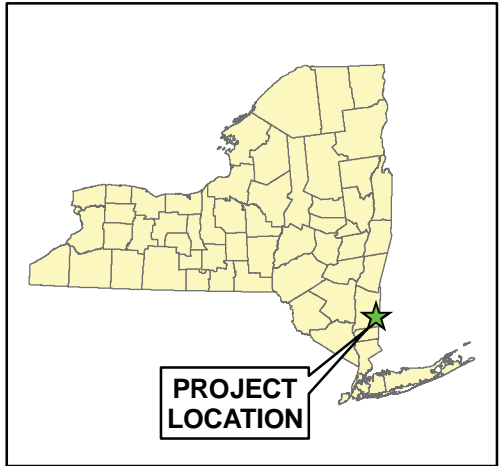
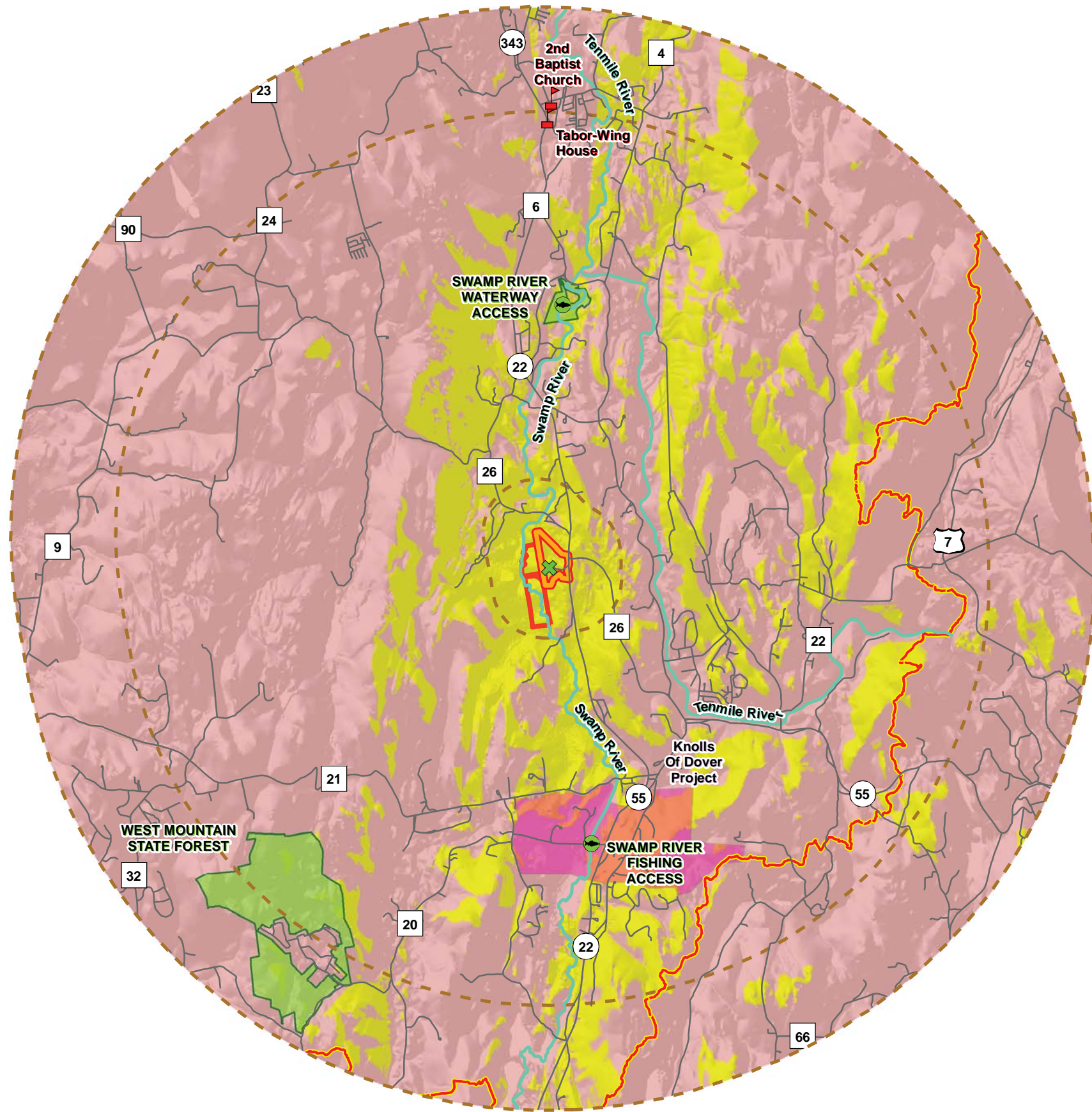
SOURCE:
 1. Aerial - Dutchess County 1-foot Resolution
 2004 Natural Color Orthoimagery
 NYS Digital Orthoimagery Program
 NYS Office of Cyber Security & Critical
 Infrastructure Coordination



**FIGURE 6.1-1
 LAND USE WITHIN 1 MILE**

Town of Dover, Dutchess County, New York

G:\project\GIS\Projects\PP_Misc\20090511_Cricket\Hill\GIS\FIGURES\MXD\20110217_Section6_VisualFig6-2-1_CVEC_ViewshedNoTrees_20110217.mxd - 2/18/2011 @ 4:07:38 PM



Legend

- Combined Stack Center
- Property
- Project Development Area
- 0.5/4/5 Miles from Project Development Area
- Not Visible
- Potentially Visible Area

Resources of Concern

- National Register of Historic Properties
- Waterway/Fishing Access
- Hydrologic Resources
- Appalachian Trail
- Knolls Of Dover Project
- NYSDEC Lands

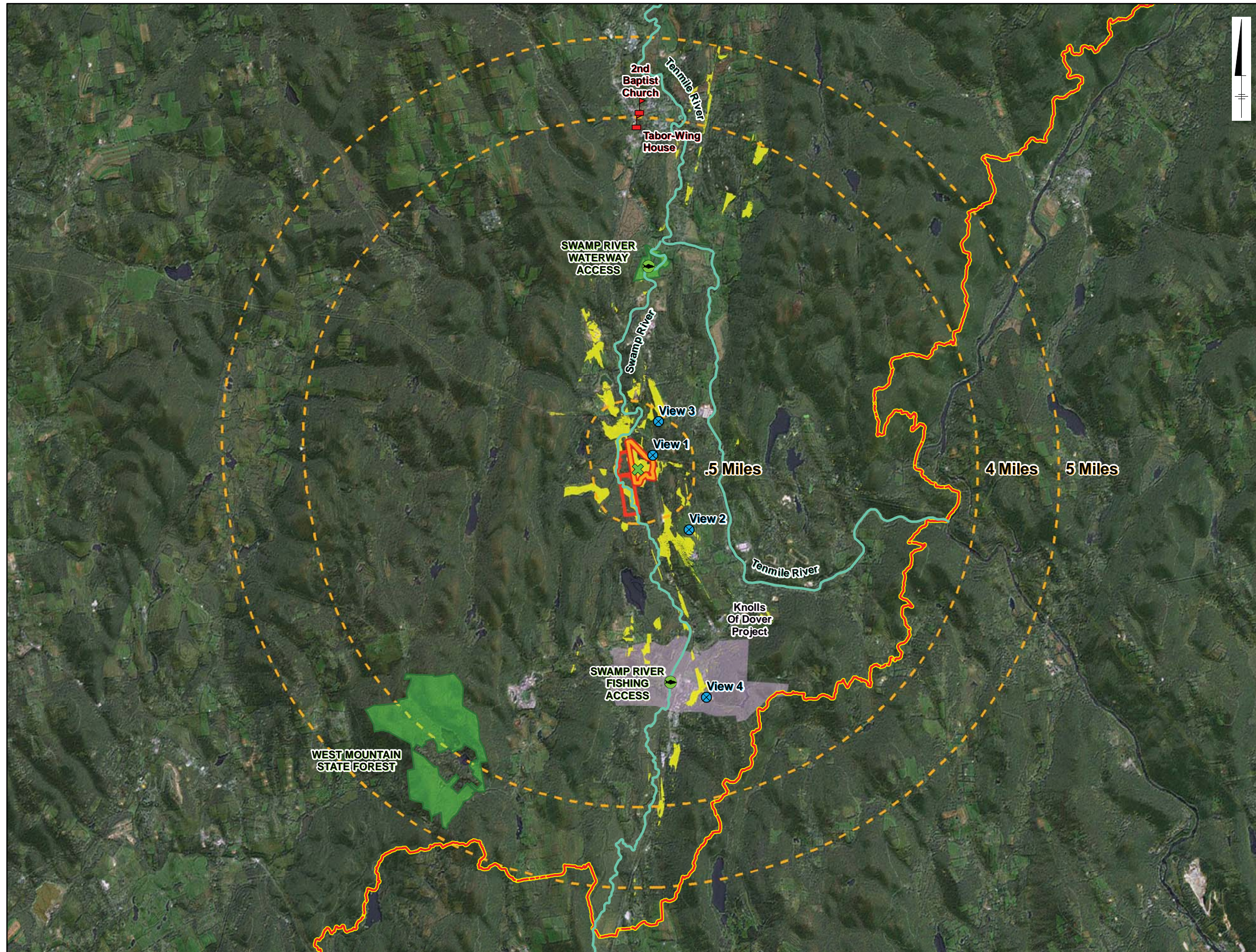
Viewshed analysis run against 10m DEM with no height adjustment for tree cover.
Center location of 282.5ft (86.11m) used as observation point.



CRICKET VALLEY ENERGY

FIGURE 6.2-1
VIEWSHED ANALYSIS WITH NO VEGETATION SCREENING
Town of Dover, Dutchess County, New York

G:\project\GIS\Projects\PP_Misc\20090511_Cricket\FIGURES\FIGURES\MXD\20110217_Section6_VisualFig6-2-2_CVEC_ViewshedResources_20110217.mxd - 2/18/2011 @ 4:10:22 PM



- Legend**
- Combined Stack Center
 - Photosimulation Viewpoint
 - Property
 - Project Development Area
 - Potentially Visible Area

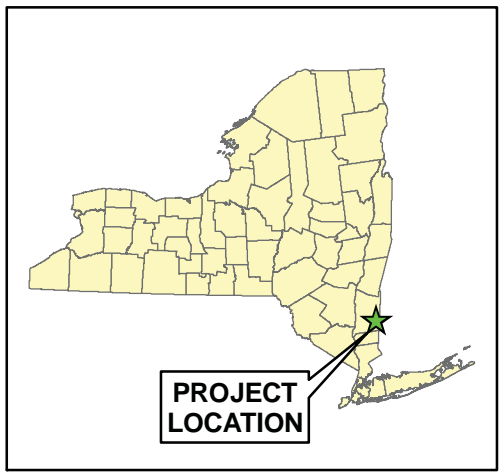
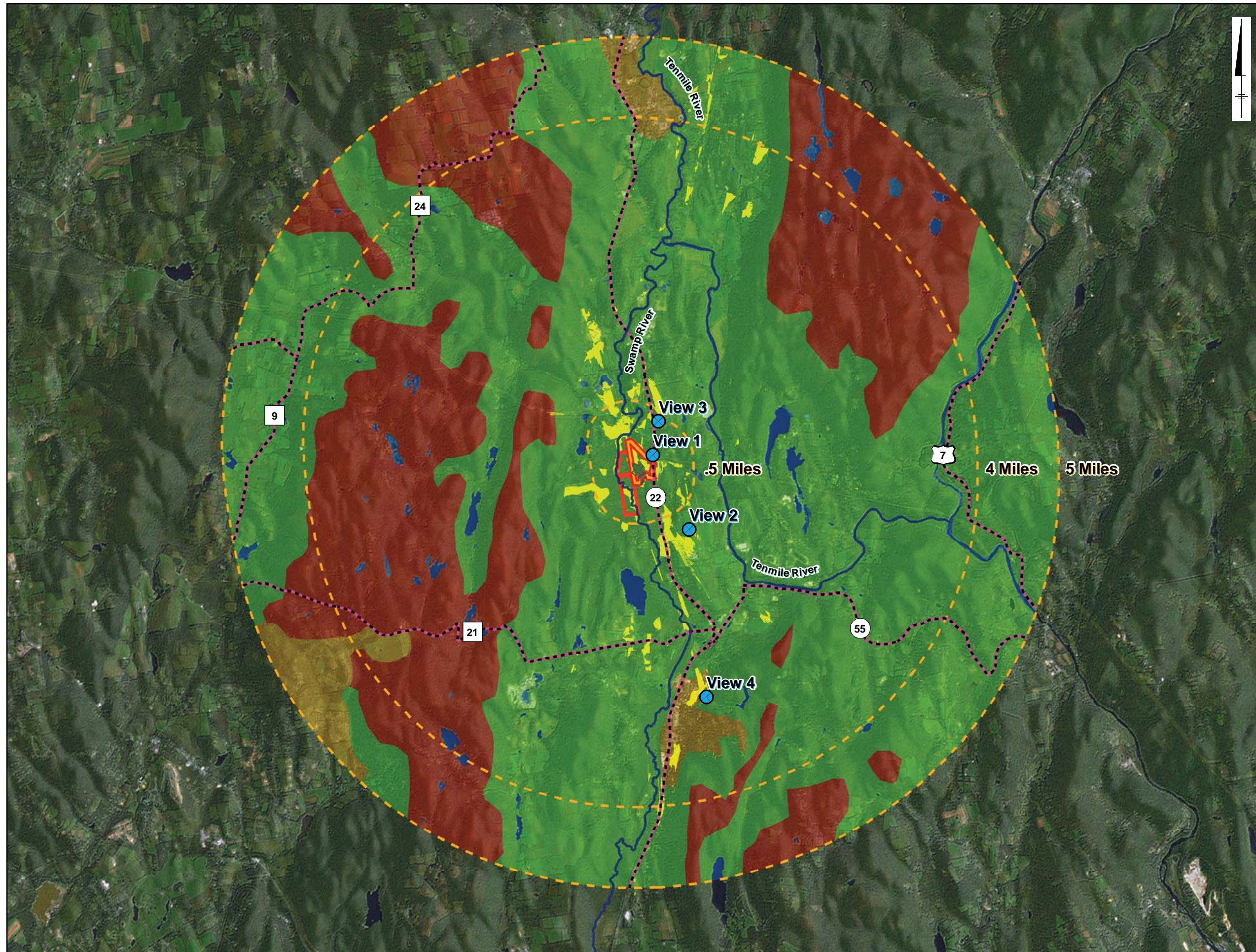
- Resources of Concern**
- Waterway/Fishing Access
 - National Register of Historic Properties
 - Appalachian Trail
 - Hydrologic Resources
 - Road Resources
 - NYSDEC Lands
 - Knolls Of Dover Project

Viewshed analysis run against 10m DEM with 20m height adjustment for tree cover.
 2005 Land Use/Land Cover data and aerial interpretation used to determine tree cover.
 Center location of 282.5ft (86.11m) used as observation point.



FIGURE 6.2-2
 VIEWSHED ANALYSIS INCLUDING VEGETATION SCREENING
 Town of Dover, Dutchess County, New York

G:\project\GIS\Projects\PP_Misc\20090511_Cricket\HillGIS\FIGURES\MXDS\20110217_Section6_VisualFig6-2-3_CVEC_ViewshedLandUse_20110217.mxd - 2/17/2011 @ 1:49:55 PM



Legend

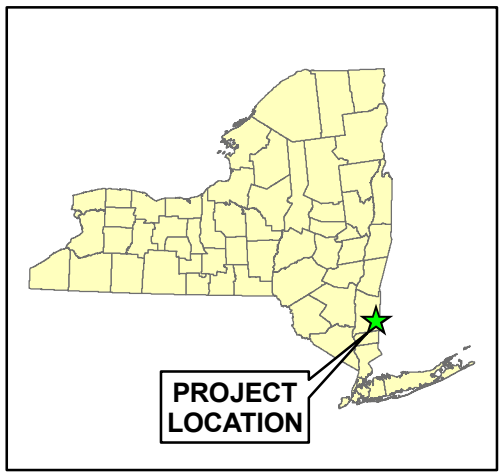
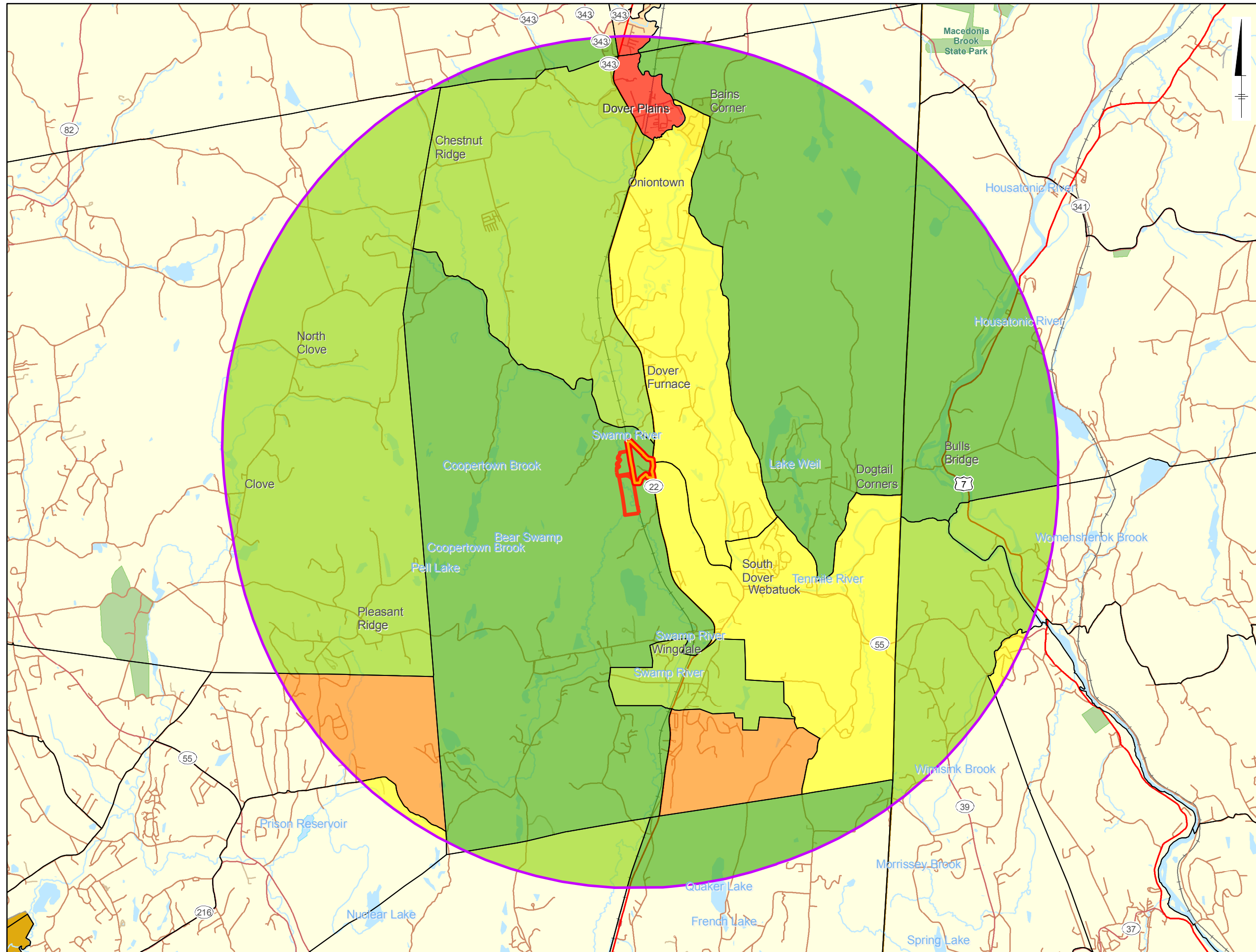
- Combined Stack Center
- Photosimulation Viewpoint
- Property
- Project Development Area
- Potentially Visible Area
- Highway Commercial Corridor
- Industrial Zone
- Open Water
- Rural Residential
- Topographic Ridge Zone
- Village/City

Viewshed analysis run against 10m DEM with 20m height adjustment for tree cover.
 2005 Land Use/Land Cover data and aerial interpretation used to determine tree cover.
 Center location of 282.5ft (86.11m) used as observation point.



FIGURE 6.2-3
 LANDSCAPE SIMILARITY ZONES
 Town of Dover, Dutchess County, New York

G:\Project\GIS\Projects\IPP_Misc\20090511_Cricket\HIGHLIGHTS\FIGURES\MXD\S20110217_Section6_VisualFig6-2-4\VEC_PopDensity5mile_20110217.mxd - 2/17/2011 @ 1:53:44 PM



Legend

- Property
- Project Development Area
- 5 mile Radius
- Block Group Outlines

Block Group Population Density 2007

- 52 - 85
- 85 - 200
- 200 - 305
- 305 - 1515
- 1515 - 2048

SOURCE:
ESRI US Census Block Groups
Census 2000 with 2007 Update

Miles

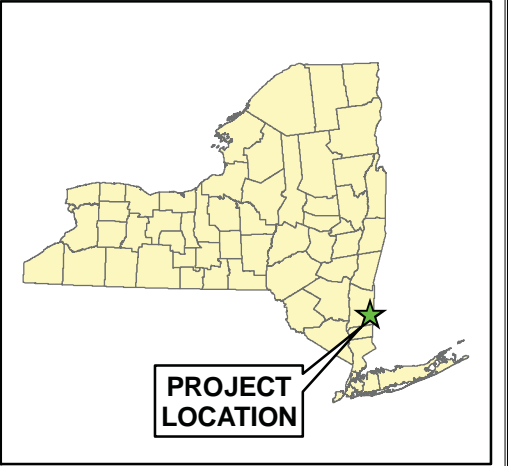
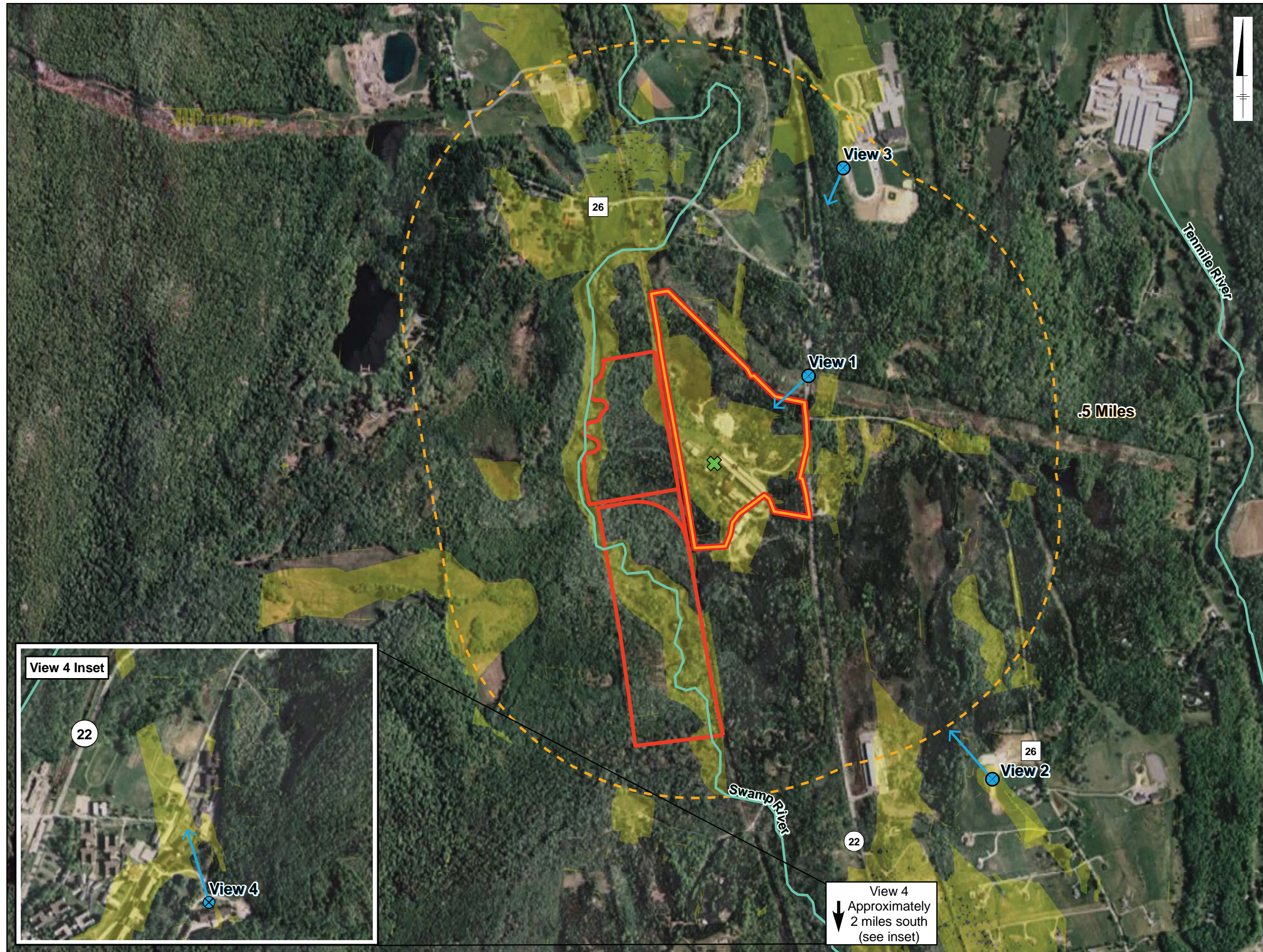
ARCADIS

CRICKET VALLEY ENERGY

FIGURE 6.2-4
POPULATION DENSITY

Town of Dover, Dutchess County, New York

G:\project\GIS\Projects\PP_Misc\20090511_CricketHill\GIS\FIGURES\FIGURES\MXD\20110217_Section6_VisualFig6-2-5_CVEC_ViewshedLocs_20110217_Inset.mxd - 2/18/2011 @ 4:35:16 PM



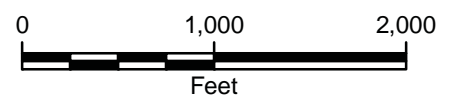
Legend

- Combined Stack Center
- Photosimulation Viewpoint
- Photosimulation Viewpoint Orientation
- Property
- Project Development Area
- Potentially Visible Area
- Hydrologic Resources

VIEWPOINT LOCATION

- View 1:**
Southbound on Route 22
- View 2:**
Cricket Hill Road Residences
- View 3:**
Dover Middle/High School Complex
- View 4:**
Knolls of Dover

-Viewshed analysis run against 10m DEM with 20m height adjustment for tree cover.
 -2005 Land Use/Land Cover data and aerial interpretation used to determine tree cover.
 -Center location of 282.5ft (86.11m) used as observation point.
 -Scale of main map and inset 1:12,000



CRICKET VALLEY ENERGY

FIGURE 6.2-5
 VIEWSHED ANALYSIS INCLUDING VEGETATION SCREENING -
 SELECTED VIEWSHED LOCATIONS

Town of Dover, Dutchess County, New York



View 4
 ↓ Approximately 2 miles south (see inset)