

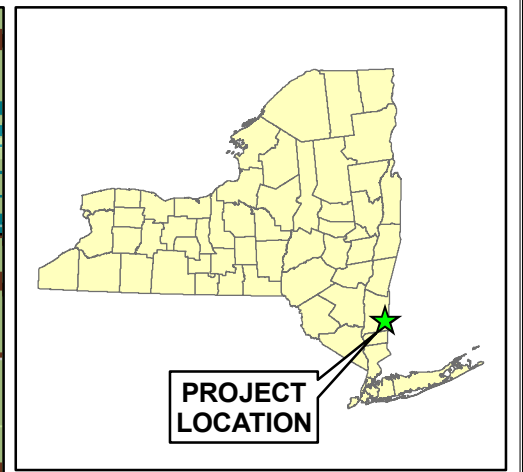
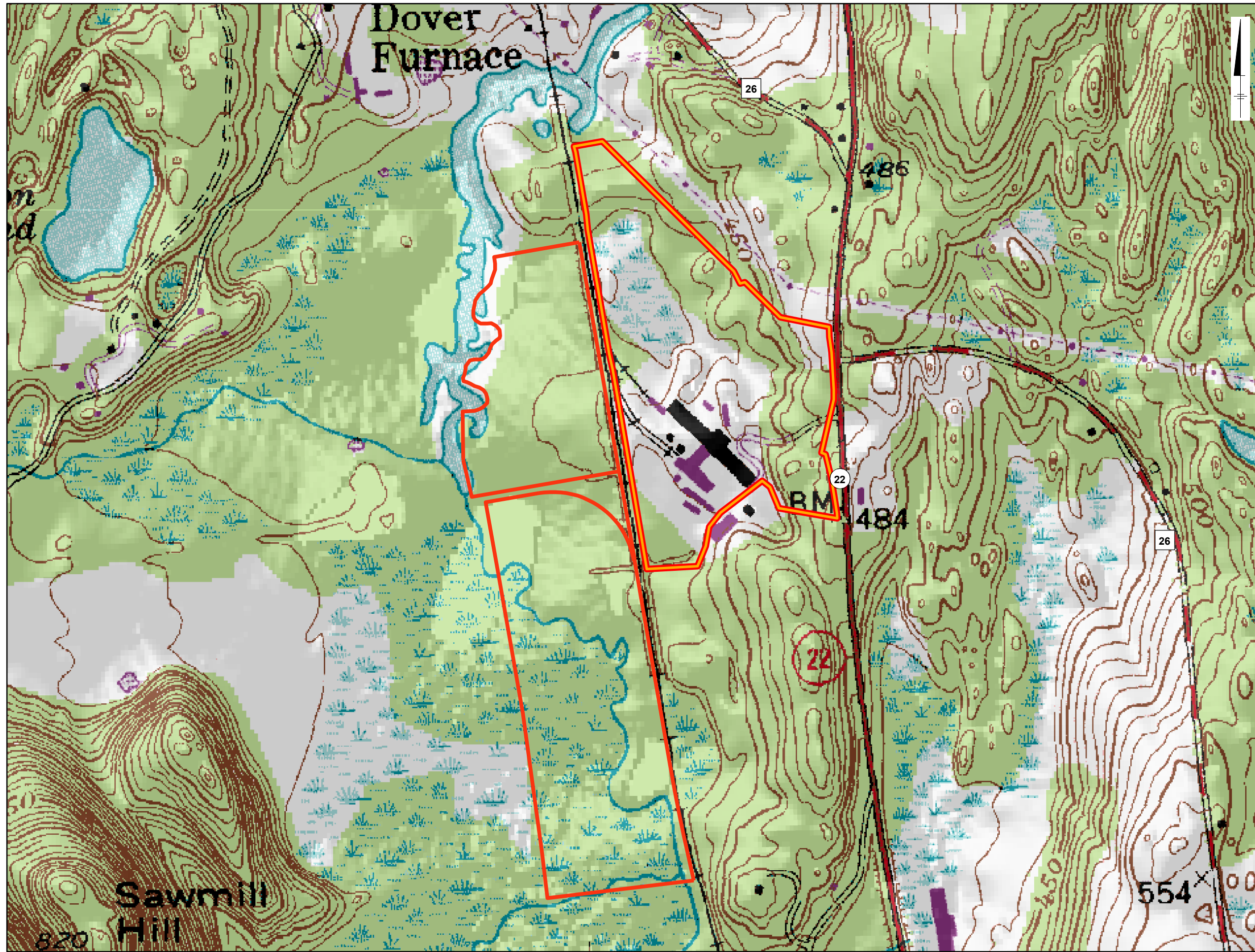
**Draft Environmental  
Impact Statement**

Cricket Valley Energy Project – Dover, NY

**Section 2 – Figures**

---

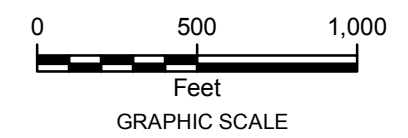
G:\projects\GIS\Projects\PP\_Misc\20090511\_CricketHill\GIS\FIGURES\MXD\20110215\_Section2\Fig2-1\_CVEC\_SiteTopo\_20110215.mxd - 2/15/2011 @ 4:46:02 PM



**Legend**

- Property
- Project Development Area

SOURCE:  
 1. USGS 7.5 Minute Topographic Maps (2000), Dover Plains Quad  
 Cornell University Geospatial Information Repository.

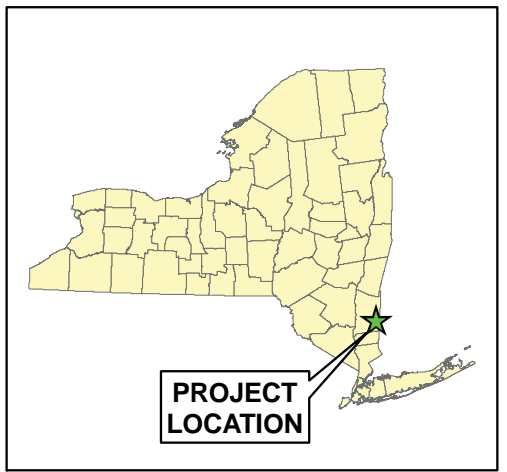


**ARCADIS**  
 CRICKET VALLEY ENERGY

**FIGURE 2-1  
 PROJECT AREA TOPOGRAPHY**

Town of Dover, Dutchess County, New York

G:\projects\GIS\Projects\PP\_Misc\20090511\_CricketHill\GIS\FIGURES\MXD\20110215\_Section2\Fig2-2\_CVEC\_Sitelocation\Bedrock\_20110215.mxd - 2/15/2011 @ 4:24:41 PM



**Legend**

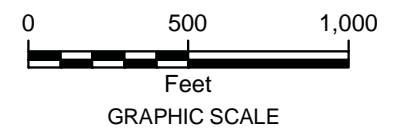
- Property
- Project Development Area

**Bedrock**

**MATERIAL**

- Cev - Everett Schist
- OCst - Stockbridge Marble
- Owl - Walloomsac Formation

SOURCE:  
 1. Bedrock Geology - Statewide Bedrock Geology, NYS Museum / NYS Geological Survey, Lower Hudson Sheet  
 2. Aerial - Dutchess County 1-foot Resolution 2004 Natural Color Orthoimagery  
 NYS Digital Orthoimagery Program  
 NYS Office of Cyber Security & Critical Infrastructure Coordination

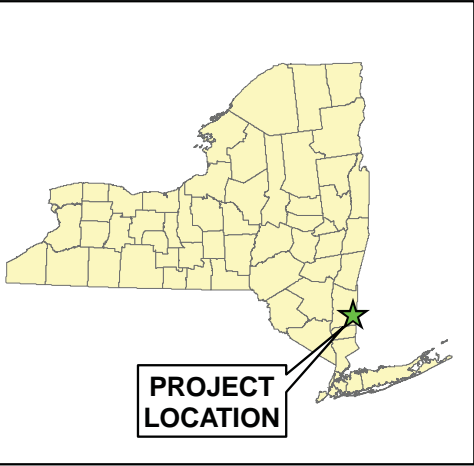
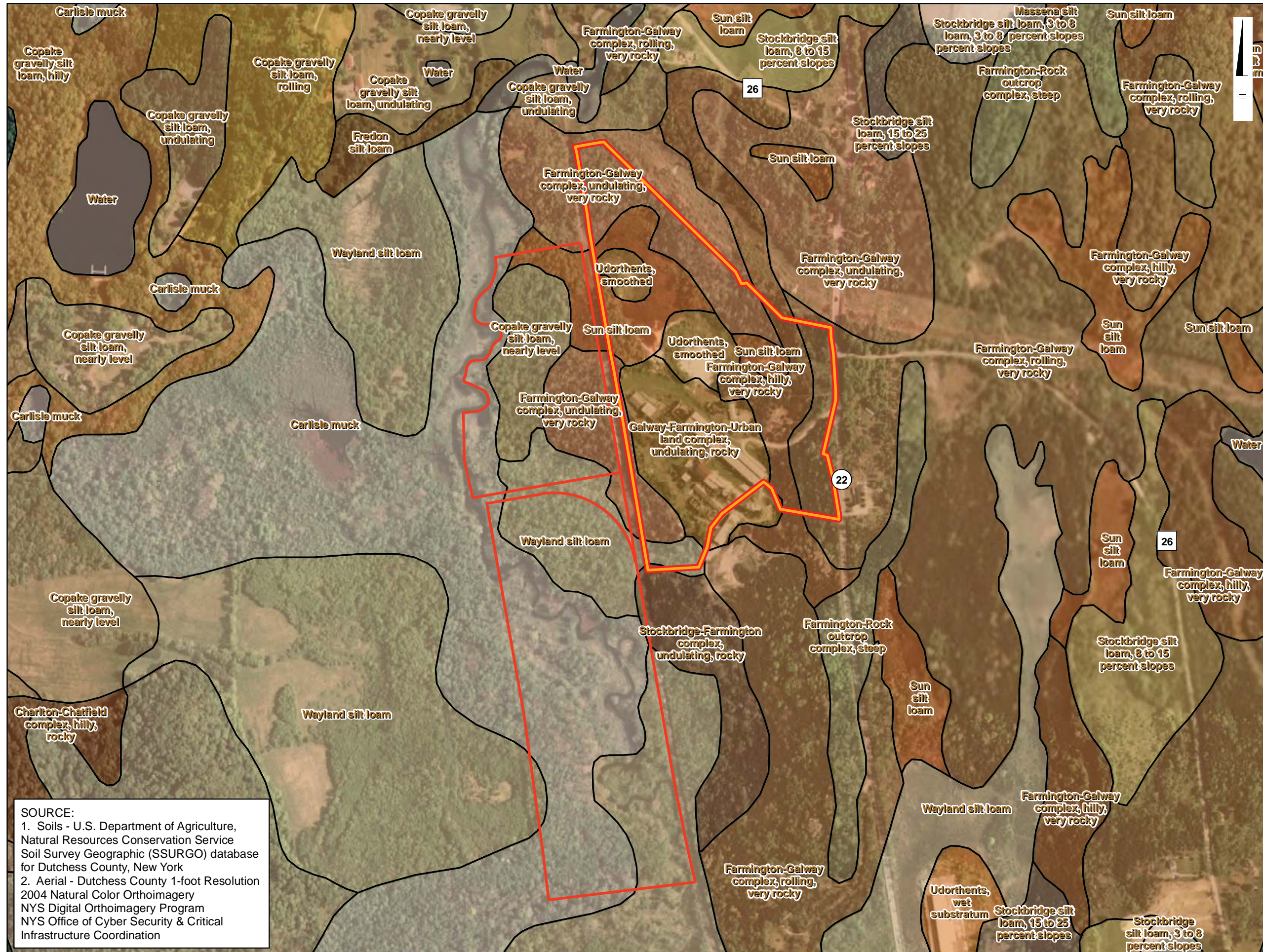


**CRICKET VALLEY ENERGY**

**FIGURE 2-2  
PROJECT AREA BEDROCK**

Town of Dover, Dutchess County, New York

G:\project\GIS\PP - Misc\20090511\_Cricket\Hill\GIS\FIGURES\MXD\20110215\_Section2\Fig-3\_CVEC\_Sitelocation\Soils\_20110215.mxd - 2/15/2011 @ 4:26:22 PM

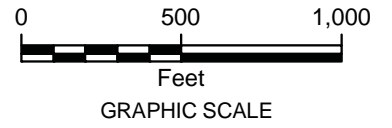


**Legend**

- Property
- Project Development Area

**Soils**

- Carlisle muck
- Charlton-Chatfield complex, hilly, rocky
- Chatfield-Hollis complex, rolling, very rocky
- Copake gravelly silt loam, hilly
- Copake gravelly silt loam, nearly level
- Copake gravelly silt loam, rolling
- Copake gravelly silt loam, undulating
- Farmington-Galway complex, hilly, very rocky
- Farmington-Galway complex, rolling, very rocky
- Farmington-Galway complex, undulating, very rocky
- Farmington-Rock outcrop complex, steep
- Fredon silt loam
- Galway-Farmington-Urban land complex, undulating, rocky
- Hollis-Chatfield-Rock outcrop complex, very steep
- Massena silt loam, 3 to 8 percent slopes
- Stockbridge silt loam, 15 to 25 percent slopes
- Stockbridge silt loam, 3 to 8 percent slopes
- Stockbridge silt loam, 8 to 15 percent slopes
- Stockbridge-Farmington complex, undulating, rocky
- Sun silt loam
- Udorthents, smoothed
- Udorthents, wet substratum
- Water
- Wayland silt loam



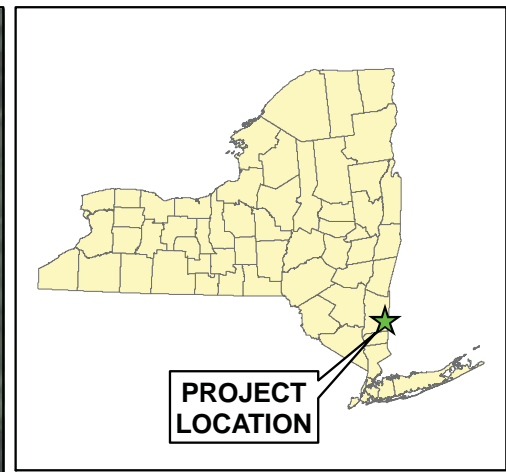
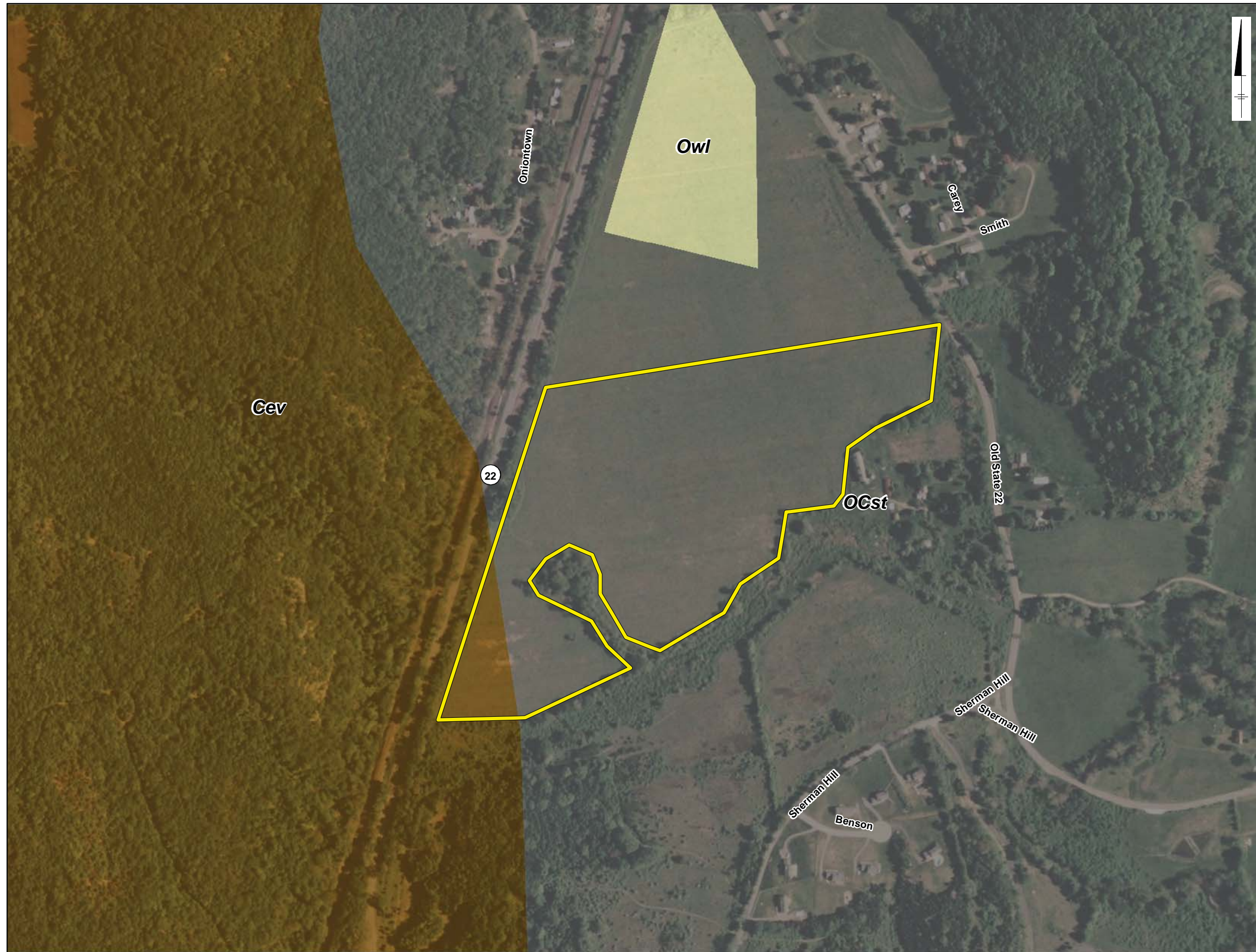
**SOURCE:**  
 1. Soils - U.S. Department of Agriculture, Natural Resources Conservation Service Soil Survey Geographic (SSURGO) database for Dutchess County, New York  
 2. Aerial - Dutchess County 1-foot Resolution 2004 Natural Color Orthoimagery NYS Digital Orthoimagery Program NYS Office of Cyber Security & Critical Infrastructure Coordination

**CRICKET VALLEY ENERGY**

**FIGURE 2-3  
PROJECT AREA SOILS**

Town of Dover, Dutchess County, New York

G:\project\GIS\Projects\PP\_Misc\20090511\_Cricket\GIS\FIGURES\MXD\20110215\_Section2\Fig-4\_CVEC\_SitelaydownBedrock\_20110215.mxd - 2/15/2011 @ 4:31:09 PM



**Legend**

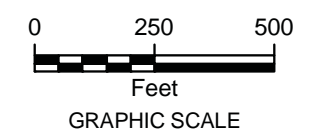
Laydown Site

**Bedrock**

**MATERIAL**

- Cev - Everett Schist
- OCst - Stockbridge Marble
- Owl - Walloomsac Formation

SOURCE:  
 1. Bedrock Geology - Statewide Bedrock Geology, NYS Museum / NYS Geological Survey, Lower Hudson Sheet  
 2. Aerial - Dutchess County 1-foot Resolution 2004 Natural Color Orthoimagery  
 NYS Digital Orthoimagery Program  
 NYS Office of Cyber Security & Critical Infrastructure Coordination

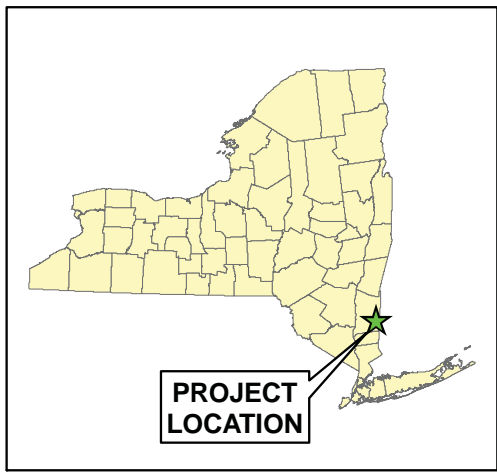
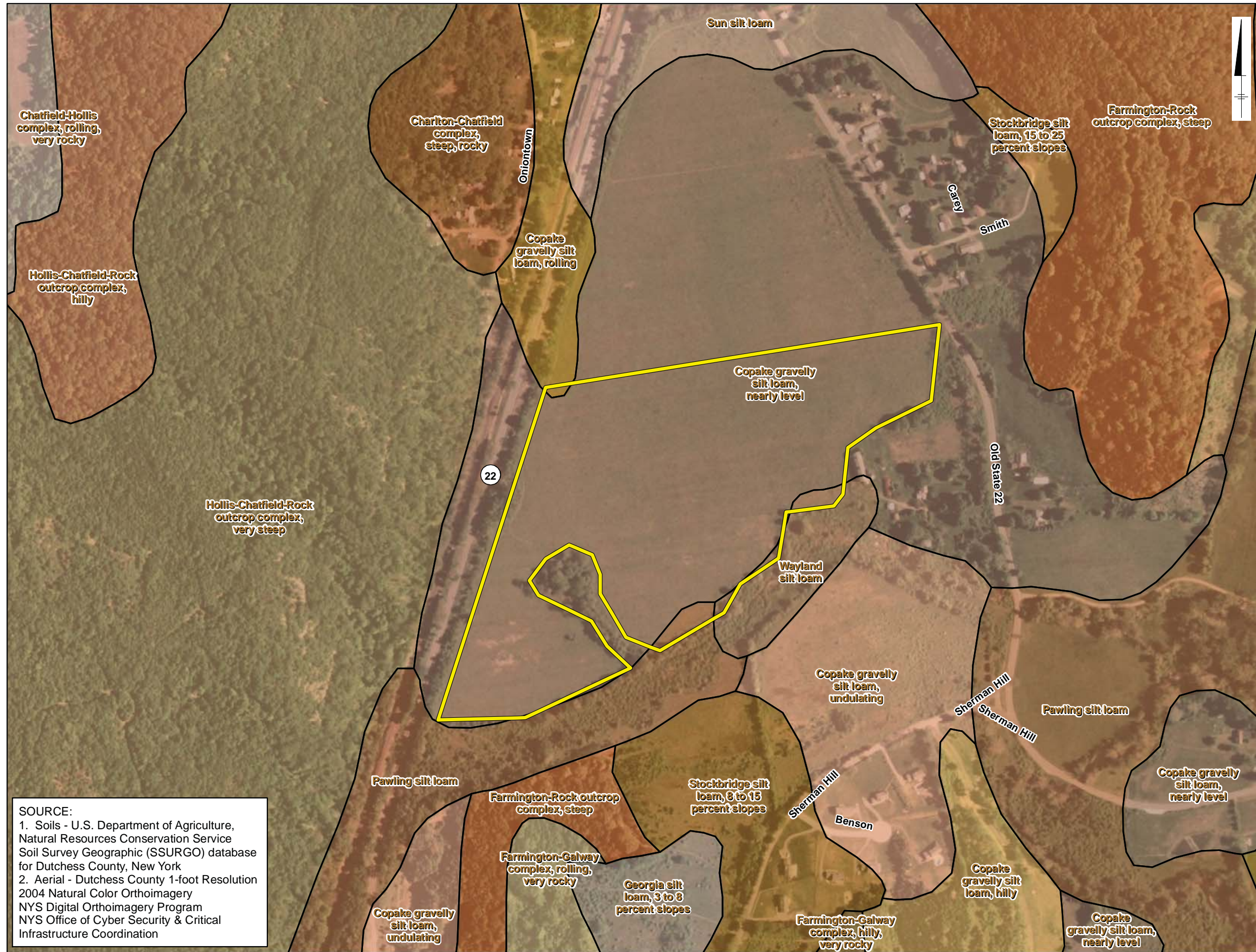


**CRICKET VALLEY ENERGY**

**FIGURE 2-4  
LAYDOWN SITE  
BEDROCK**

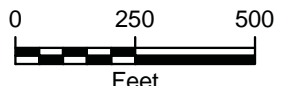
Town of Dover, Dutchess County, New York

G:\projects\GIS\Projects\IPP\_Misc\20090611\_Crickethill\GIS\FIGURES\MXD\20110215\_Section2\Fig2-5\_CVEC\_SitelaydownSoils\_20110215.mxd - 2/15/2011 @ 4:34:33 PM



**Legend**

- Laydown Site
- Soils**
- Charlton-Chatfield complex, steep, rocky
- Chatfield-Hollis complex, rolling, very rocky
- Copake gravelly silt loam, hilly
- Copake gravelly silt loam, nearly level
- Copake gravelly silt loam, rolling
- Copake gravelly silt loam, undulating
- Farmington-Galway complex, hilly, very rocky
- Farmington-Galway complex, rolling, very rocky
- Farmington-Rock outcrop complex, steep
- Georgia silt loam, 3 to 8 percent slopes
- Hollis-Chatfield-Rock outcrop complex, hilly
- Hollis-Chatfield-Rock outcrop complex, very steep
- Pawling silt loam
- Stockbridge silt loam, 15 to 25 percent slopes
- Stockbridge silt loam, 8 to 15 percent slopes
- Stockbridge-Farmington complex, rolling, rocky
- Sun silt loam
- Wayland silt loam



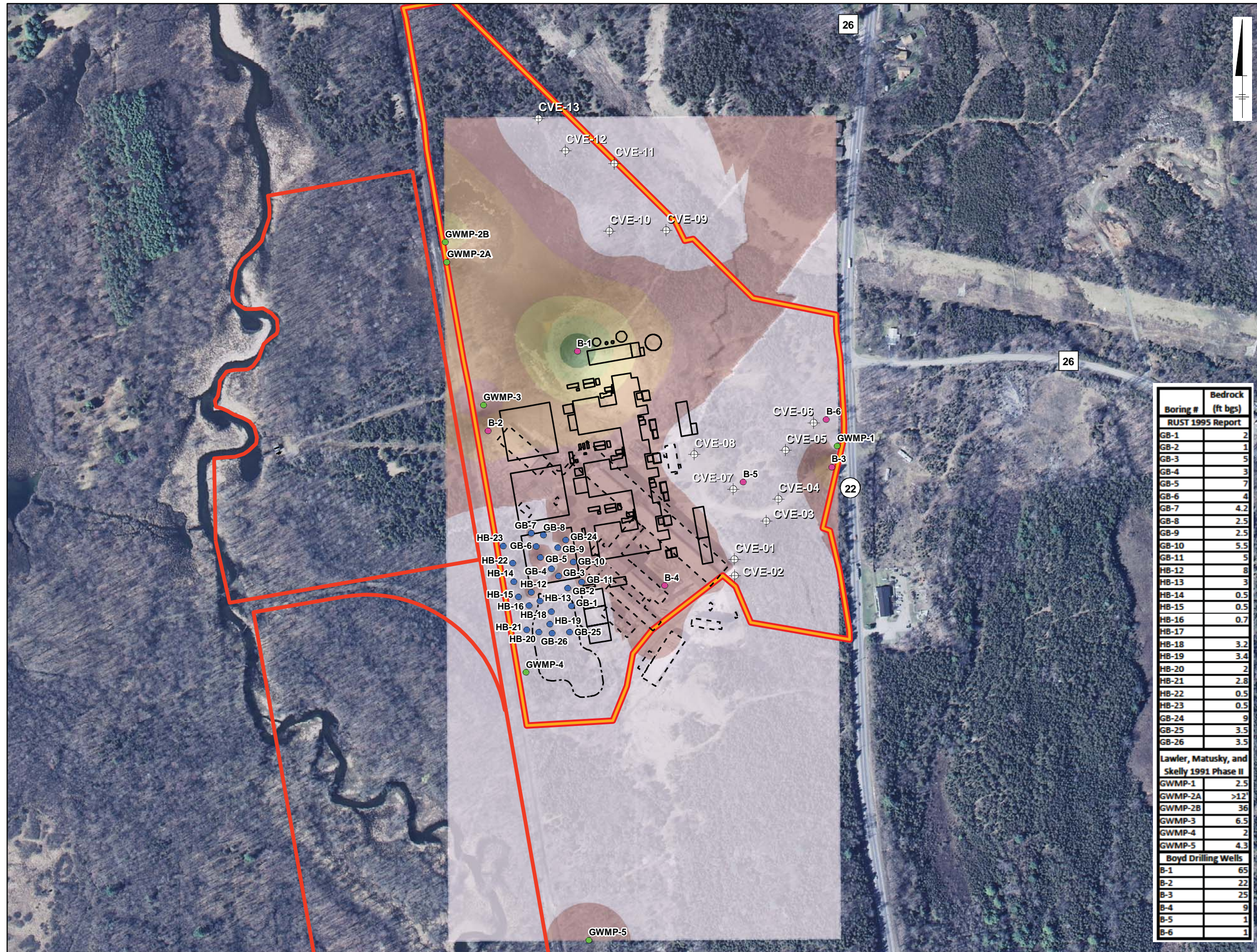
**CRICKET VALLEY ENERGY**

**FIGURE 2-5  
LAYDOWN SITE SOILS**

Town of Dover, Dutchess County, New York

**SOURCE:**  
 1. Soils - U.S. Department of Agriculture, Natural Resources Conservation Service Soil Survey Geographic (SSURGO) database for Dutchess County, New York  
 2. Aerial - Dutchess County 1-foot Resolution 2004 Natural Color Orthoimagery  
 NYS Digital Orthoimagery Program  
 NYS Office of Cyber Security & Critical Infrastructure Coordination

G:\projects\GIS\Projects\PP\_Misc\20090511\_CricketHill\GIS\FIGURES\MXD\S20110215\_Section2\Fig2-5\_CVEC\_DepthToBedrock\_20110215.mxd - 2/15/2011 @ 4:33:18 PM



- Legend**
- Property
  - Project Development Area
  - - - Existing Building
  - Proposed Structures
  - - - Stormwater Basins
- Well and Boring Locations**
- BOYD
  - LMS 1991 PHASE II
  - RUST 1995 REPORT

- Exposed Outcrops**
- ⊕ 0' to Bedrock
- Depth to Bedrock (ft bgs)**
- 65 - -57
  - 57 - -42
  - 42 - -26
  - 26 - -12
  - 12 - -4
  - 4 - 0

SOURCE:  
 1. Aerial - Dutchess County 1-foot Resolution 2004 Natural Color Orthoimagery  
 NYS Digital Orthoimagery Program  
 NYS Office of Cyber Security & Critical Infrastructure Coordination



Boring #	Bedrock (ft bgs)
<b>RUST 1995 Report</b>	
GB-1	2
GB-2	1
GB-3	5
GB-4	3
GB-5	7
GB-6	4
GB-7	4.2
GB-8	2.5
GB-9	2.5
GB-10	5.5
GB-11	5
GB-12	8
GB-13	3
GB-14	0.5
GB-15	0.5
GB-16	0.7
GB-17	
GB-18	3.2
GB-19	3.4
GB-20	2
GB-21	2.8
GB-22	0.5
GB-23	0.5
GB-24	9
GB-25	3.5
GB-26	3.5
<b>Lawler, Matusky, and Skelly 1991 Phase II</b>	
GWMP-1	2.5
GWMP-2A	>12'
GWMP-2B	36
GWMP-3	6.5
GWMP-4	2
GWMP-5	4.3
<b>Boyd Drilling Wells</b>	
B-1	65
B-2	22
B-3	25
B-4	9
B-5	1
B-6	1



**FIGURE 2-6  
 DEPTH TO BEDROCK**

Town of Dover, Dutchess County, New York