

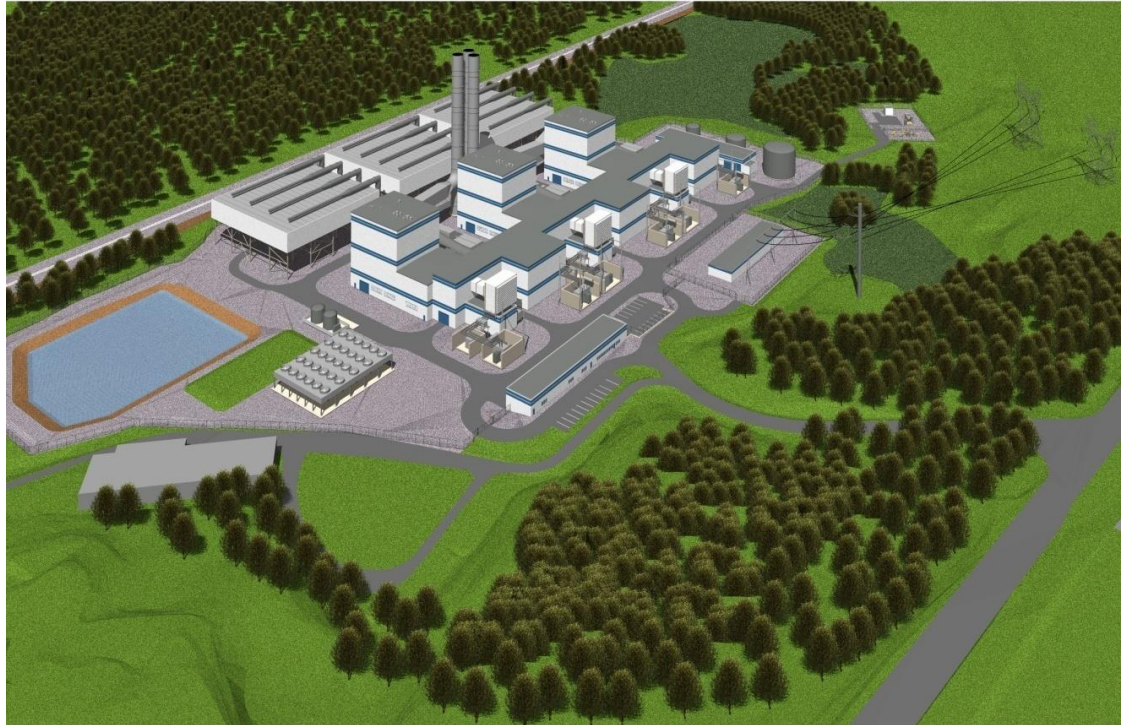
Advisory Working Group

Water, Wetlands & Wildlife

March 24, 2011

Agenda

- ☐ Introductions
- ☐ Project Update
- ☐ Wetland Restoration
- ☐ Q&A
- ☐ Next Meeting



Project Update

❑ Air Permit Application

Comments submitted to DEC and EPA on February 4, 2011

Subject of discussion at April 7th AWG on Air Quality

❑ Draft Environmental Impact Statement (DEIS)

DEIS submitted to DEC in late February – currently under DEC review

Expected to be released to public in mid-April

Public hearing: Anticipated in June at Dover Middle School Auditorium

❑ Public Review – available at:

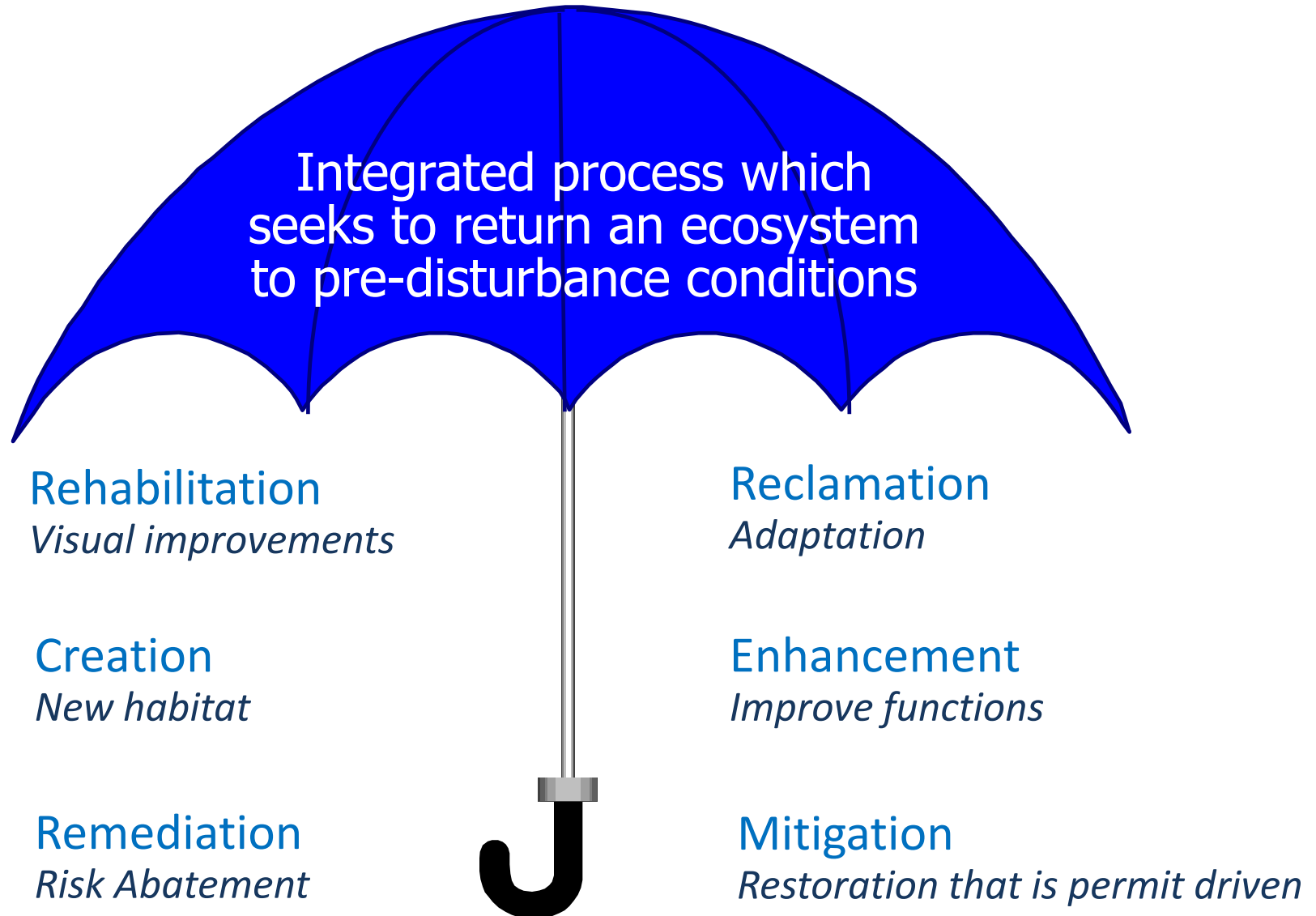
Town Hall www.townofdoverny.us

DEC Region 3 Office www.dec.ny.gov/permits/64754.html

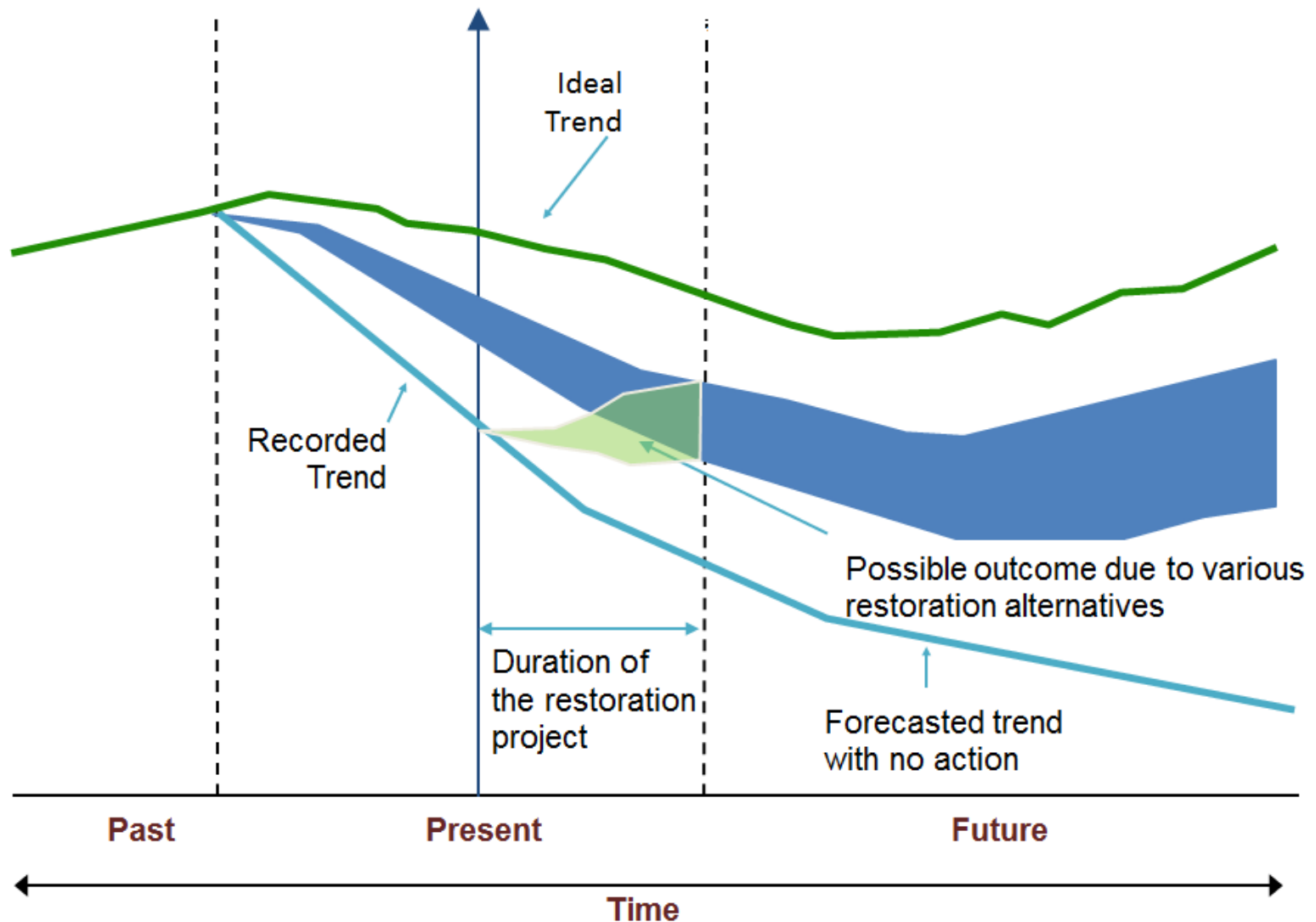
CVE office www.cricketvalley.com

Dover/Wingdale Library

What is Wetlands Restoration?



Balancing Restoration Realities



Wetland & Adjacent Area Existing Conditions



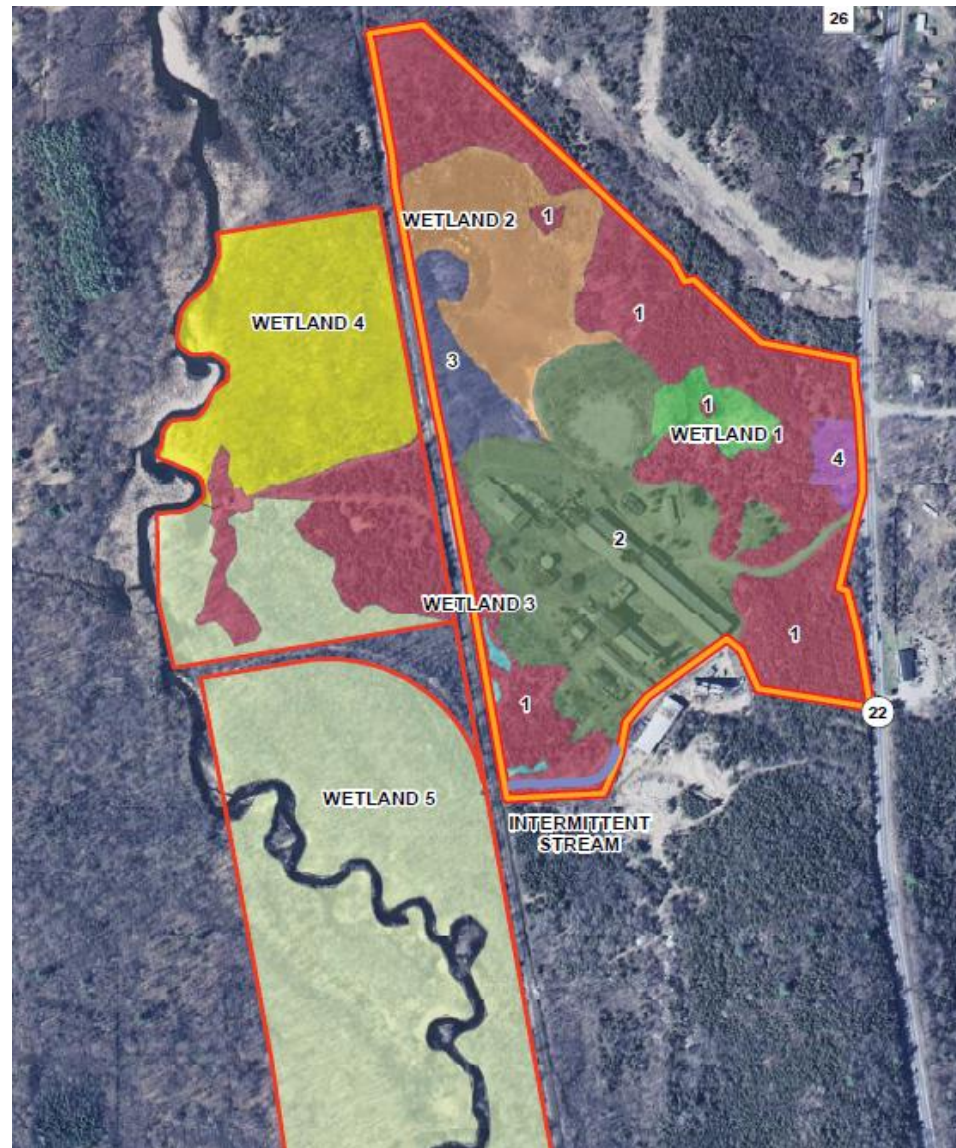
Wetland & Adjacent Area Existing Conditions



Wetland & Adjacent Area Existing Conditions



Habitat Types on CVE Property



Legend

- Property
- Project Development Area

Land Cover

- 1, SUCCESSIONAL RED CEDAR WOODLAND
- 2, RURAL STRUCTURE EXTERIOR/ MOWED LAWN W/TREES, W/PAVED RD/PATH & UNPAVED RD/PATH
- 3, SUCCESSIONAL SOUTHERN HARDWOODS 1
- 4, SUCCESSIONAL SOUTHERN HARDWOODS 2
- WETLAND 1, REED GRASS/PURPLE LOOSESTRIFE MARSH
- WETLAND 2, REED GRASS/PURPLE LOOSESTRIFE MARSH
- WETLAND 3, REED GRASS/PURPLE LOOSESTRIFE MARSH
- WETLAND 4, DECIDUOUS FOREST WETLAND
- WETLAND 5, DECIDUOUS FOREST WETLAND
- INTERMITTENT STREAM WETLAND

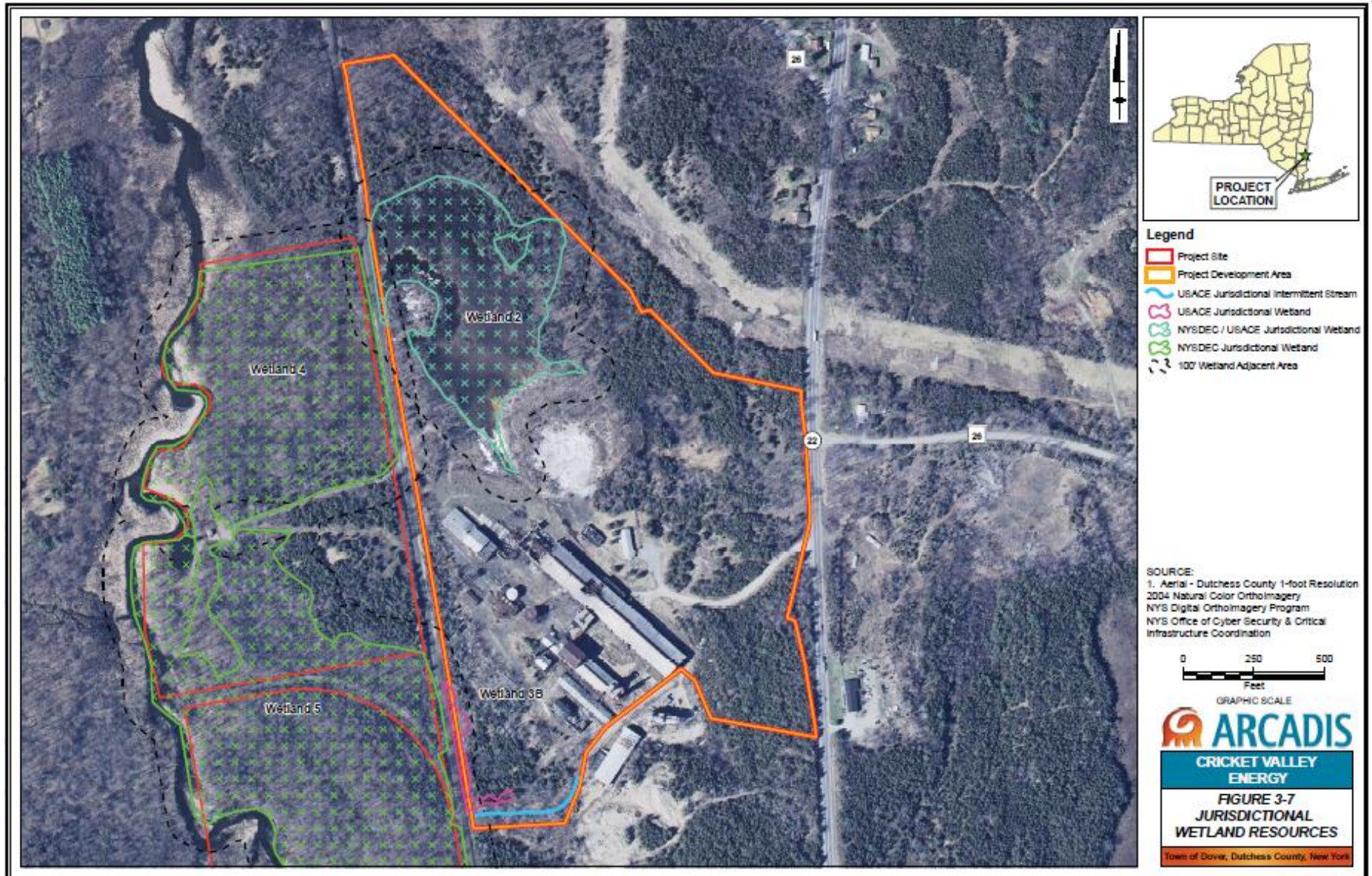
SOURCE:

1. Aerial - Dutchess County 1-foot Resolution
2004 Natural Color Orthoimagery
NYS Digital Orthoimagery Program
NYS Office of Cyber Security & Critical
Infrastructure Coordination

Why is Wetlands Restoration Needed?

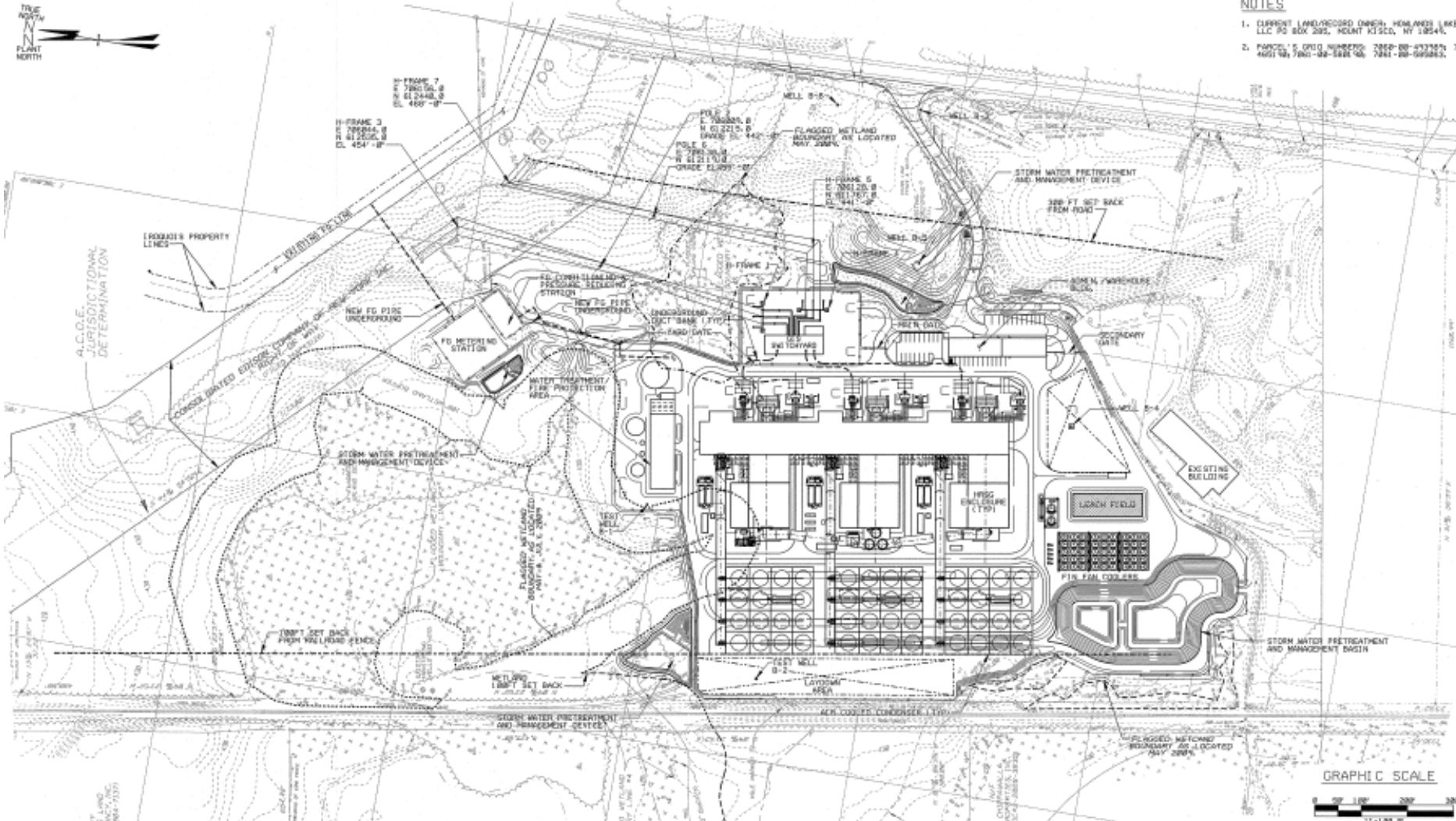
- ❑ **Affected wetlands are regulated by State and Federal laws**
 - NYSDEC Article 24 which includes 100-foot Adjacent Area
 - US Army Corps of Engineers Section 404 of the Clean Water Act
- ❑ **Wetland preservation will include:**
 - Preservation of ~75 acres of land west of RR tracks (mostly wetland)
- ❑ **Facility construction will include:**
 - Filling of 0.05 acres of degraded wetland (project footprint)
 - Loss of ~0.8 acres of associated Adjacent Area (project footprint)
 - Temporary disturbance of ~0.6 acres of Adjacent Area (replanted)
- ❑ **Select removal of former industrial fill to a licensed landfill**
 - Restoration of ~0.4 acres of Adjacent Area (debris removal; replanted)

Jurisdictional Wetlands on the CVE Property

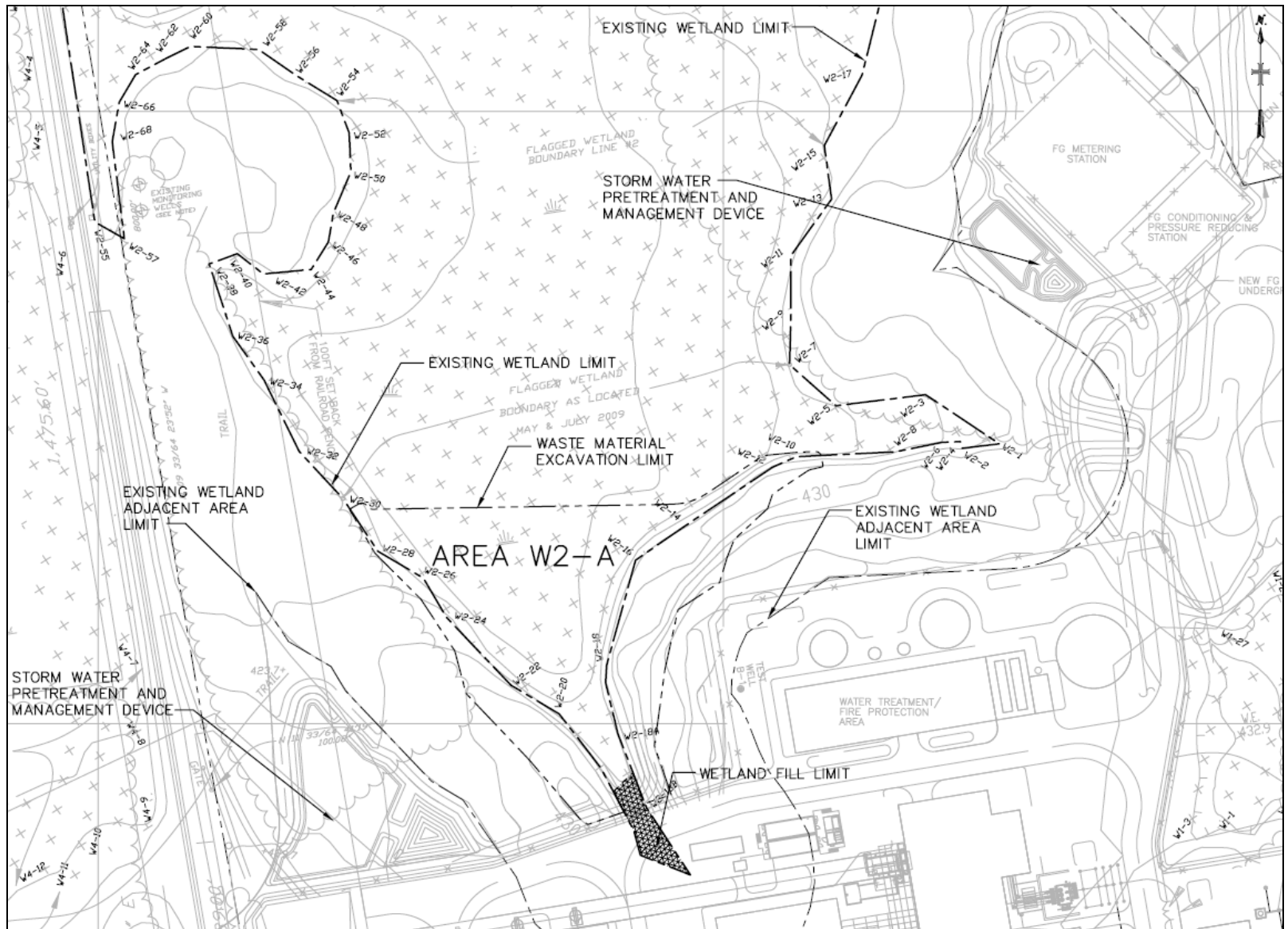


CVE's Wetland Restoration Goals

- ☐ Reclaim select fill areas
- ☐ Rehabilitate aesthetically & functionally
- ☐ Enhance habitat diversity
 - Wetlands
 - Adjacent Area
- ☐ Enhance hydrology
- ☐ Meet State & Federal permit requirements



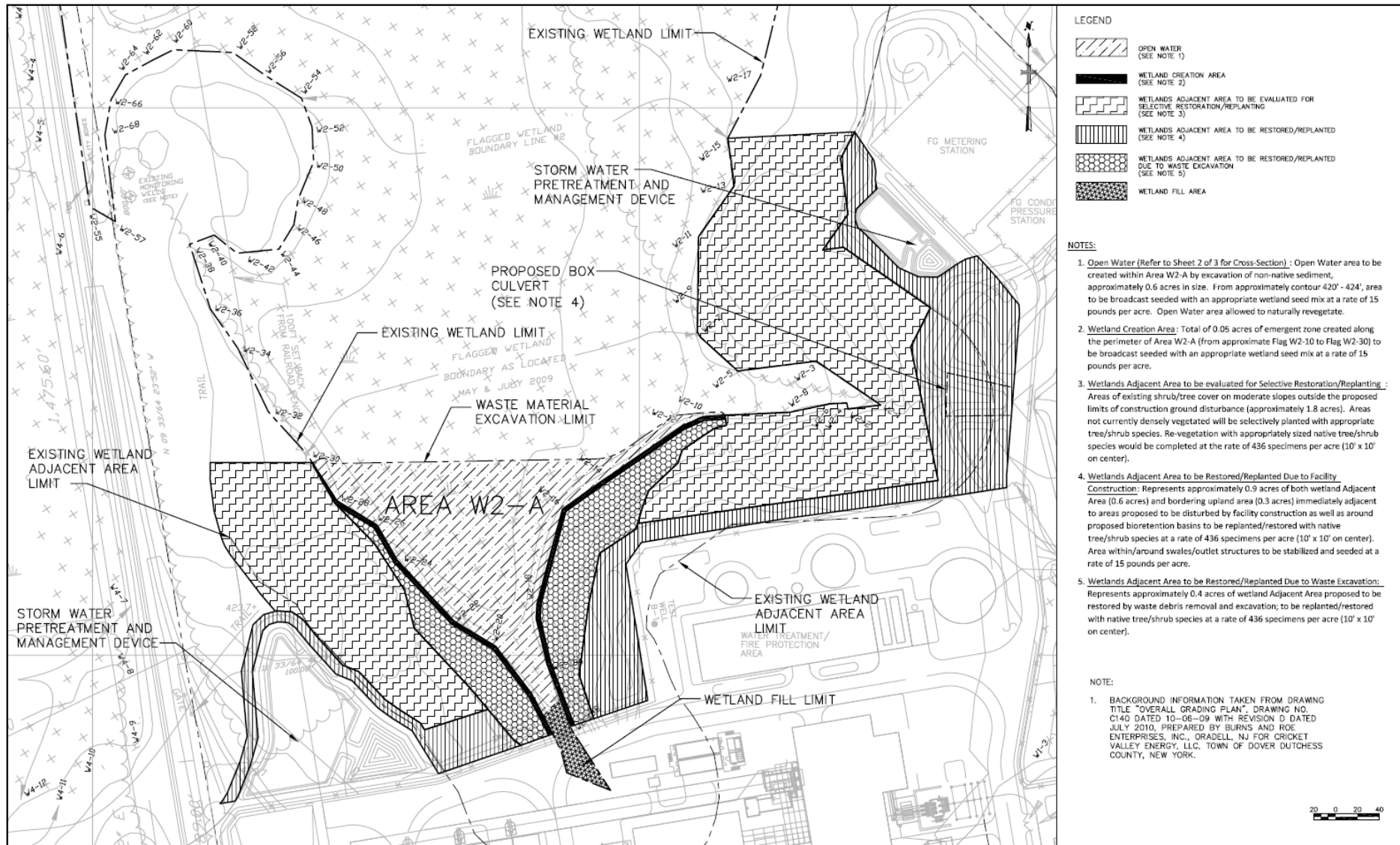
CVE's Wetland Restoration Plan



15



CVE's Wetland Restoration Plan



Questions & Contacts



Matthew Martin, Associate Project Manager

845-877-0596, mmartin@advancedpowerna.com

5 Market Street, Dover, NY 12522

Bob De Meyere, Project Manager

617-456-2214, bdemeyere@advancedpowerna.com

31 Milk Street, Suite 1001, Boston, MA 02109